

# RARRES1 Polyclonal Antibody

catalog number: E-AB-16100

**Note:** Centrifuge before opening to ensure complete recovery of vial contents.

## Description

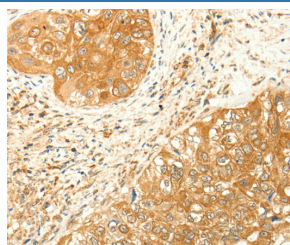
<b>Reactivity</b>	Human
<b>Immunogen</b>	Synthetic peptide of human RARRES1
<b>Host</b>	Rabbit
<b>Isotype</b>	IgG
<b>Purification</b>	Affinity purification
<b>Conjugation</b>	Unconjugated
<b>buffer</b>	Phosphate buffered solution, pH 7.4, containing 0.05% stabilizer and 50% glycerol.

## Applications

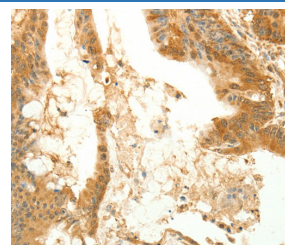
## Recommended Dilution

<b>IHC</b>	1:100-1:300
------------	-------------

## Data



Immunohistochemistry of paraffin-embedded Human cervical cancer tissue using RARRES1 Polyclonal Antibody at dilution 1:60



Immunohistochemistry of paraffin-embedded Human colon cancer tissue using RARRES1 Polyclonal Antibody at dilution 1:60

## Preparation & Storage

<b>Storage</b>	Store at -20°C Valid for 12 months. Avoid freeze / thaw cycles.
<b>Shipping</b>	The product is shipped with ice pack, upon receipt, store it immediately at the temperature recommended.

## Background

This gene was identified as a retinoid acid (RA) receptor-responsive gene. It encodes a type I membrane protein. The expression of this gene is upregulated by tazarotene as well as by retinoic acid receptors. The expression of this gene is found to be downregulated in prostate cancer, which is caused by the methylation of its promoter and CpG island. Alternatively spliced transcript variant encoding distinct isoforms have been observed.

## For Research Use Only