

## Recombinant Human SerpinA3/AACT Protein (His Tag)

**Catalog Number:** PKSH033032

**Note:** Centrifuge before opening to ensure complete recovery of vial contents.

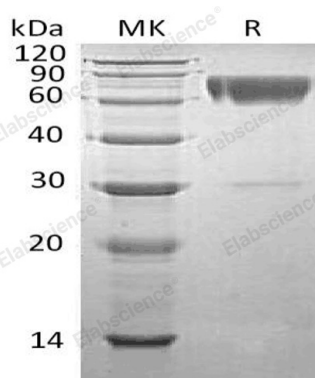
### Description

<b>Species</b>	Human
<b>Source</b>	HEK293 Cells-derived Human SerpinA3;AACT protein His24-Ala423(Lys267Arg), with an C-terminal His
<b>Calculated MW</b>	46.3 kDa
<b>Observed MW</b>	50-80 kDa
<b>Accession</b>	P01011
<b>Bio-activity</b>	Not validated for activity

### Properties

<b>Purity</b>	> 90 % as determined by reducing SDS-PAGE.
<b>Endotoxin</b>	< 1.0 EU per µg of the protein as determined by the LAL method.
<b>Storage</b>	Generally, lyophilized proteins are stable for up to 12 months when stored at -20 to -80 °C. Reconstituted protein solution can be stored at 4-8°C for 2-7 days. Aliquots of reconstituted samples are stable at < -20°C for 3 months.
<b>Shipping</b>	This product is provided as lyophilized powder which is shipped with ice packs.
<b>Formulation</b>	Lyophilized from a 0.2 µm filtered solution of 20mM HEPES, 150mM NaCl, pH 7.5. Normally 5% - 8% trehalose, mannitol and 0.01% Tween 80 are added as protectants before lyophilization.
	Please refer to the specific buffer information in the printed manual.
<b>Reconstitution</b>	Please refer to the printed manual for detailed information.

### Data



> 90 % as determined by reducing SDS-PAGE.

### Background

Serpin A3 belongs to the Serpin superfamily of serine protease inhibitors. Serpin A3 has been shown to inhibit some serine proteases, such as neutrophil cathepsin G and mast cell chymase. Serpin A3 is synthesized initially in the liver and secreted in plasma. Serpin A3 has been found in the amyloid plaques from the hippocampus of Alzheimer disease brain s. In addition to, Serpin A3 is associated with liver disease and Parkinson disease and chronic obstructive pulmonary disease.

### For Research Use Only

Toll-free: 1-888-852-8623  
Web: [www.elabscience.com](http://www.elabscience.com)

Tel: 1-832-243-6086  
Email: [techsupport@elabscience.com](mailto:techsupport@elabscience.com)

Fax: 1-832-243-6017