

## PTPIP51/RMDN3 Polyclonal Antibody

catalog number: E-AB-92682

**Note:** Centrifuge before opening to ensure complete recovery of vial contents.

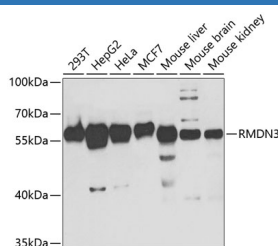
### Description

|                     |  |
|---------------------|--|
| <b>Reactivity</b>   | Human;Mouse;Rat  |
| <b>Immunogen</b>    | Recombinant fusion protein of human PTPIP51/RMDN3                                  |
| <b>Host</b>         | Rabbit   |
| <b>Isotype</b>      | IgG  |
| <b>Purification</b> | Affinity purification  |
| <b>Buffer</b>       | Phosphate buffered solution, pH 7.4, containing 0.05% stabilizer and 50% glycerol. |

### Applications

| Applications | Recommended Dilution |
|--------------|----------------------|
| <b>WB</b>    | 1:500-1:2000         |
| <b>IHC</b>   | 1:50-1:100           |
| <b>IF</b>    | 1:50-1:200           |

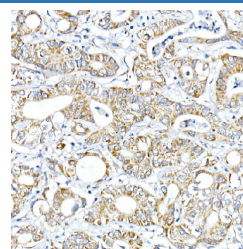
### Data



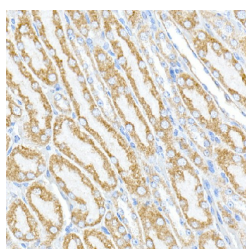
Western blot analysis of extracts of various cell lines using PTPIP51/RMDN3 Polyclonal Antibody at 1:1000 dilution.

**Observed-MW:60 kDa**

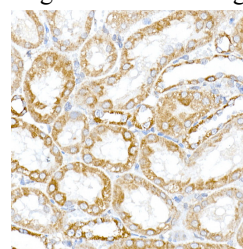
**Calculated-MW:38 kDa/52 kDa**



Immunohistochemistry of paraffin-embedded human liver cancer using PTPIP51/RMDN3 Polyclonal Antibody at dilution of 1:100 (40x lens). Perform high pressure antigen retrieval with 10 mM citrate buffer pH 6.0 before commencing with IHC staining protocol.

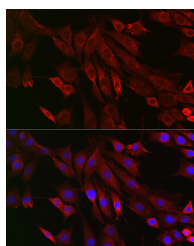


Immunohistochemistry of paraffin-embedded mouse kidney using PTPIP51/RMDN3 Polyclonal Antibody at dilution of 1:100 (40x lens). Perform high pressure antigen retrieval with 10 mM citrate buffer pH 6.0 before commencing with IHC staining protocol.

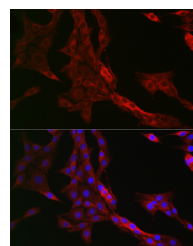


Immunohistochemistry of paraffin-embedded rat kidney using PTPIP51/RMDN3 Polyclonal Antibody at dilution of 1:100 (40x lens). Perform high pressure antigen retrieval with 10 mM citrate buffer pH 6.0 before commencing with IHC staining protocol.

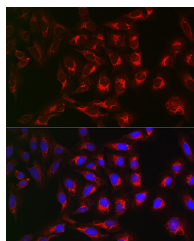
### For Research Use Only



Immunofluorescence analysis of NIH/3T3 cells using PTPIP51/RMDN3 Polyclonal Antibody at dilution of 1:200 (40x lens). Blue: DAPI for nuclear staining.



Immunofluorescence analysis of PC-12 cells using PTPIP51/RMDN3 Polyclonal Antibody at dilution of 1:200 (40x lens). Blue: DAPI for nuclear staining.



Immunofluorescence analysis of U2OS cells using PTPIP51/RMDN3 Polyclonal Antibody at dilution of 1:200 (40x lens). Blue: DAPI for nuclear staining.

## Preparation & Storage

### Storage

Store at -20°C Valid for 12 months. Avoid freeze / thaw cycles.

### Shipping

The product is shipped with ice pack, upon receipt, store it immediately at the temperature recommended.

## Background

RMDN3 (regulator of microtubule dynamics 3) is a protein-coding gene. Diseases associated with RMDN3 include cerebritis, and noma. GO annotations related to this gene include protein binding. An important paralog of this gene is RMDN1.

## For Research Use Only