

Recombinant CLSTN1 Monoclonal Antibody

Catalog Number:E-AB-81547



Note: Centrifuge before opening to ensure complete recovery of vial contents.

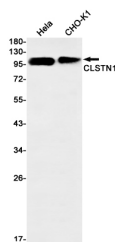
Description

Reactivity	Human,Mouse,Hamster
Immunogen	A synthetic peptide of human CLSTN1
Host	Rabbit
Isotype	IgG
Clone	R07-8H2
Purification	Affinity Purified
Conjugation	Unconjugated
Formulation	50mM Tris-Glycine(pH 7.4), 0.15M NaCl, 40% Glycerol, 0.01% Sodium azide and 0.05% protective protein

Applications Recommended Dilution

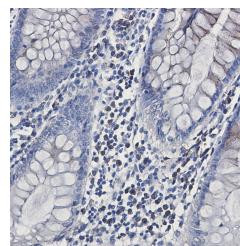
WB	1:500-1:1000
IHC	1:50-1:100

Data



Western blot detection of CLSTN1 in HeLa,CHO-K1 cell lysates using CLSTN1 Rabbit mAb(1:1000 diluted).Predicted band size:110kDa.Observed band size:110kDa.

Observed Mw:110kDa
Calculated Mw:110kDa



Immunohistochemistry of CLSTN1 in paraffin-embedded Human colon cancer tissue using CLSTN1 Rabbit mAb at dilution 1:50

Preparation & Storage

Storage Store at -20°C. Avoid freeze / thaw cycles.

Background

Calsyntenins (calsyntenin-1, -2, -3) compose a family of neuronally expressed proteins that belong to the cadherin superfamily of cell adhesion molecules (PMID: 24966372; 12498782). Calsyntenin-1 (CLSTN1) is a proteolytically processed postsynaptic membrane protein with a cytoplasmic calcium-binding domain. By binding Ca²⁺, calsyntenin-1 may modulate Ca²⁺-mediated postsynaptic signals (PMID: 11161476). Calsyntenin-1 is a transmembrane cargo-docking protein for Kinesin-1-mediated vesicular transport (PMID: 16760430). It can mediate axonal transport of the amyloid precursor protein and regulate A β production

For Research Use Only

A Reliable Research Partner in Life Science and Medicine

Toll-free: 1-888-852-8623

Web: www.elabscience.com

Tel: 1-832-243-6086

Email: techsupport@elabscience.com

Fax: 1-832-243-6017