

MIB2 Polyclonal Antibody

Catalog Number:E-AB-91924



Note: Centrifuge before opening to ensure complete recovery of vial contents.

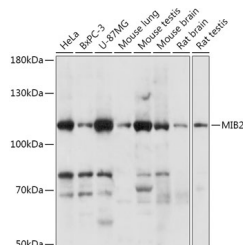
Description

| | |
|---------------------|---|
| Reactivity | Human,Mouse,Rat |
| Immunogen | Recombinant fusion protein of human MIB2 |
| Host | Rabbit |
| Isotype | IgG |
| Purification | Affinity purification |
| Conjugation | Unconjugated |
| Formulation | PBS with 0.01% thiomersal,50% glycerol,pH7.3. |

Applications Recommended Dilution

| | |
|-----------|--------------|
| WB | 1:500-1:2000 |
|-----------|--------------|

Data



Western blot analysis of extracts of various cell lines using MIB2 Polyclonal Antibody at 1:1000 dilution.

Observed MW:110kDa

Preparation & Storage

Storage Store at -20°C. Avoid freeze/thaw cycles.

Background

The protein encoded by this gene is an E3 ubiquitin protein ligase that mediates ubiquitination of proteins in the Notch signaling pathway. The encoded protein may be a suppressor of melanoma invasion. [provided by RefSeq, Mar 2017]

For Research Use Only

A Reliable Research Partner in Life Science and Medicine

Toll-free: 1-888-852-8623

Web: www.elabscience.com

Tel: 1-832-243-6086

Email: techsupport@elabscience.com

Fax: 1-832-243-6017