

NFκB-p105/p50 Polyclonal Antibody

Catalog Number: E-AB-32226

2 Publications



Note: Centrifuge before opening to ensure complete recovery of vial contents.

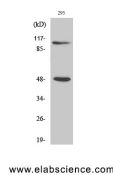
Description

Reactivity	Human, Mouse
Immunogen	Synthesized peptide derived from human NFκB-p105/p50 around the non-phosphorylation site of Ser337.
Host	Rabbit
Isotype	IgG
Purification	Affinity purification
Conjugation	Unconjugated
Formulation	PBS with 0.02% sodium azide, 0.5% protective protein and 50% glycerol, pH7.4

Applications Recommended Dilution

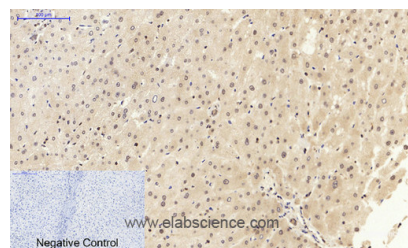
WB	1:500-1:2000
IHC	1:100-1:300
IF	1:200-1:1000
ELISA	1:40000

Data

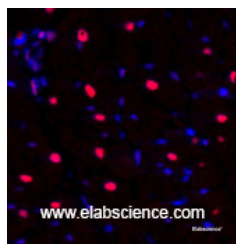


Western Blot analysis of 293T cells using NFκB-p105/p50 Polyclonal Antibody at dilution of 1:500.

Observed Mw: 50,110kDa
Calculated Mw: 105kDa



Immunohistochemistry of paraffin-embedded Human liver tissue using NFκB-p105/p50 Polyclonal Antibody at dilution of 1:200.



Immunofluorescence analysis of Rat heart tissue using NFκB-p105/p50 Polyclonal Antibody at dilution of 1:200.

Preparation & Storage

Storage Store at -20°C. Avoid freeze / thaw cycles.

For Research Use Only

A Reliable Research Partner in Life Science and Medicine

Toll-free: 1-888-852-8623

Web: www.elabscience.com

Tel: 1-832-243-6086

Email: techsupport@elabscience.com

Fax: 1-832-243-6017

Background

NFκB is a pleiotropic transcription factor which is present in almost all cell types and is involved in many biological processes such as inflammation, immunity, differentiation, cell growth, tumorigenesis and apoptosis. Activated NFκB translocates into the nucleus and stimulates the expression of genes involved in a wide variety of biological functions. Inappropriate activation of NFκB has been associated with a number of inflammatory diseases while persistent inhibition of NFκB leads to inappropriate immune cell development or delayed cell growth. NFκB1 appears to have dual functions such as cytoplasmic retention of attached NF-kappa-B proteins by p105 and generation of p50 by a cotranslational processing. This antibody can bind both p105 and p50 isoforms of NFκB1.

For Research Use Only

A Reliable Research Partner in Life Science and Medicine

Toll-free: 1-888-852-8623

Tel: 1-832-243-6086

Fax: 1-832-243-6017

Web: www.elabscience.com

Email: techsupport@elabscience.com