

# Recombinant Human CHST15/BRAG Protein (His Tag)

Catalog Number: PKSH031295



**Note:** Centrifuge before opening to ensure complete recovery of vial contents.

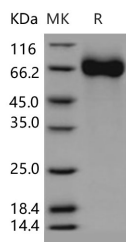
## Description

<b>Synonyms</b>	BRAG;GALNAC4S-6ST
<b>Species</b>	Human
<b>Expression Host</b>	HEK293 Cells
<b>Sequence</b>	Ser 99-Thr 561
<b>Accession</b>	NP_056976.2
<b>Calculated Molecular Weight</b>	56.0 kDa
<b>Observed molecular weight</b>	70-80 kDa
<b>Tag</b>	N-His

## Properties

<b>Purity</b>	> 97 % as determined by reducing SDS-PAGE.
<b>Endotoxin</b>	< 1.0 EU per µg of the protein as determined by the LAL method.
<b>Storage</b>	Generally, lyophilized proteins are stable for up to 12 months when stored at -20 to -80°C. Reconstituted protein solution can be stored at 4-8°C for 2-7 days. Aliquots of reconstituted samples are stable at < -20°C for 3 months.
<b>Shipping</b>	This product is provided as lyophilized powder which is shipped with ice packs.
<b>Formulation</b>	Lyophilized from sterile PBS, pH 7.4 Normally 5 % - 8 % trehalose, mannitol and 0.01 % Tween80 are added as protectants before lyophilization. Please refer to the specific buffer information in the printed manual.
<b>Reconstitution</b>	Please refer to the printed manual for detailed information.

## Data



> 97 % as determined by reducing SDS-PAGE.

## Background

Carbohydrate sulfotransferase 15, also known as N-acetylgalactosamine 4-sulfate 6-O-sulfotransferase, GalNAc4S-6ST, B-cell RAG-associated gene protein, CHST15 and BRAG, is a single-pass type II membrane protein which belongs to the sulfotransferase 1 family. CHST15 / BRAG is expressed in B-cell-enriched tissues but not in fetal or adult thymus. It is expressed in fetal and adult spleen, lymph node, tonsil, bone marrow and peripheral leukocytes. It is not expressed in T-cells. In pro-B, pre-B, and mature B-cell lines, it colocalizes with RAG1. CHST15 / BRAG is a sulfotransferase that transfers sulfate from 3'-phosphoadenosine 5'-phosphosulfate (PAPS) to the C-6 hydroxyl group of the GalNAc 4-sulfate residue of chondroitin sulfate A and forms chondroitin sulfate E containing GlcA-GalNAc(4,6-SO<sub>4</sub>) repeating units. It also transfers sulfate to a unique non-reducing terminal sequence, GalNAc(4SO<sub>4</sub>)-GlcA(2SO<sub>4</sub>)-GalNAc(6SO<sub>4</sub>), to yield a

## For Research Use Only

A Reliable Research Partner in Life Science and Medicine

Toll-free: 1-888-852-8623

Web: [www.elabscience.com](http://www.elabscience.com)

Tel: 1-832-243-6086

Email: [techsupport@elabscience.com](mailto:techsupport@elabscience.com)

Fax: 1-832-243-6017

# Recombinant Human CHST15/BRAG Protein (His Tag)

Catalog Number: PKSH031295

**DIA • AN**®  
by Elabscience

highly sulfated structure similar to the structure found in thrombomodulin chondroitin sulfate. CHST15 / BRAG may also act as a B-cell receptor involved in BCR ligation-mediated early activation that mediate regulatory signals key to B-cell development and / or regulation of B-cell-specific RAG expression.

---

## For Research Use Only

A Reliable Research Partner in Life Science and Medicine

Toll-free: 1-888-852-8623

Tel: 1-832-243-6086

Fax: 1-832-243-6017

Web: [www.elabscience.com](http://www.elabscience.com)

Email: [techsupport@elabscience.com](mailto:techsupport@elabscience.com)