

# Recombinant Human Galectin-8/LGALS8 Protein

Catalog Number:PKSH032476



**Note:** Centrifuge before opening to ensure complete recovery of vial contents.

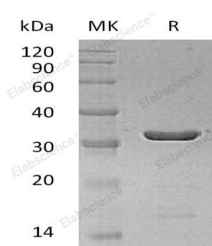
## Description

<b>Synonyms</b>	Galectin-8;Gal-8;Po66 Carbohydrate-Binding Protein;Po66-CBP;Prostate Carcinoma Tumor Antigen 1;PCTA-1;LGALS8
<b>Species</b>	Human
<b>Expression Host</b>	E.coli
<b>Sequence</b>	Met 2-Trp 317
<b>Accession</b>	O00214
<b>Calculated Molecular Weight</b>	36.6 kDa
<b>Observed molecular weight</b>	34 kDa
<b>Tag</b>	N-His
<b>Bioactivity</b>	Measured by its ability to agglutinate human red blood cells.The ED <sub>50</sub> for this effect is < 8 µg/mL.

## Properties

<b>Purity</b>	> 98 % as determined by reducing SDS-PAGE.
<b>Endotoxin</b>	< 0.1 EU per µg of the protein as determined by the LAL method.
<b>Storage</b>	Generally, lyophilized proteins are stable for up to 12 months when stored at -20 to -80°C. Reconstituted protein solution can be stored at 4-8°C for 2-7 days. Aliquots of reconstituted samples are stable at < -20°C for 3 months.
<b>Shipping</b>	This product is provided as lyophilized powder which is shipped with ice packs.
<b>Formulation</b>	Lyophilized from sterile PBS, pH 7.4. Normally 5 % - 8 % trehalose, mannitol and 0.01% Tween80 are added as protectants before lyophilization. Please refer to the specific buffer information in the printed manual.
<b>Reconstitution</b>	Please refer to the printed manual for detailed information.

## Data



> 98 % as determined by reducing SDS-PAGE.

## Background

The Galectin family of proteins, with specificity for N-acetylglucosamine-containing glycoproteins, consists of beta-galactoside binding lectins containing homologous carbohydrate recognition domains (CRDs). They also possess hemagglutination activity, which is attributable to their bivalent carbohydrate binding properties. Galectins are active both intracellularly and extracellularly. Although they are localized primarily in the cytoplasm and lack a classical signal peptide, galectins can also be secreted by one or more unidentified, non-classical, secretory pathways. They have diverse

## For Research Use Only

A Reliable Research Partner in Life Science and Medicine

Toll-free: 1-888-852-8623

Web: [www.elabscience.com](http://www.elabscience.com)

Tel: 1-832-243-6086

Email: [techsupport@elabscience.com](mailto:techsupport@elabscience.com)

Fax: 1-832-243-6017

# Recombinant Human Galectin-8/LGALS8 Protein

Catalog Number:PKSH032476



effects on many cellular functions including adhesion, migration, polarity, chemotaxis, proliferation, apoptosis, and differentiation. Galectins may therefore play a key role in many pathological states, including autoimmune diseases, allergic reactions, inflammation, tumor cell metastasis, atherosclerosis, and diabetic complications. The galectins have been classified into the prototype galectins(1, 2, 5, 7, 10, 11, 13, 14), which contain one CRD and exist either as a monomer or a noncovalent homodimer. The chimera galectins(Galectin3) containing one CRD linked to a nonlectin domain, and the tandemrepeat Galectins(4, 6, 8, 9, 12) consisting of two CRDs joined by a linker peptide. Galectins lack a classical signal peptide and can be localized to the cytosolic compartments where they have intracellular functions. However, via one or more as yet unidentified nonclassical secretory pathways, galectins can also be secreted to function extracellularly.

## For Research Use Only

A Reliable Research Partner in Life Science and Medicine

Toll-free: 1-888-852-8623

Web: [www.elabscience.com](http://www.elabscience.com)

Tel: 1-832-243-6086

Email: [techsupport@elabscience.com](mailto:techsupport@elabscience.com)

Fax: 1-832-243-6017