

Connexin-45 Polyclonal Antibody

catalog number: **E-AB-16352**

Note: *Centrifuge before opening to ensure complete recovery of vial contents.*

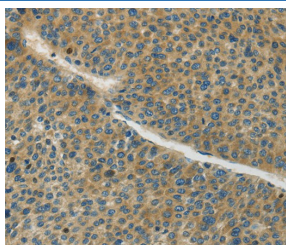
Description

Reactivity	Human;Mouse;Rat
Immunogen	Synthetic peptide of human GJC1
Host	Rabbit
Isotype	IgG
Purification	Affinity purification
Buffer	Phosphate buffered solution, pH 7.4, containing 0.05% stabilizer and 50% glycerol.

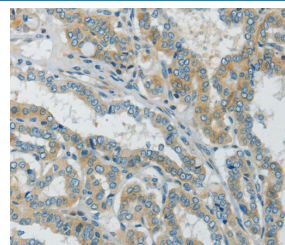
Applications

Applications	Recommended Dilution
IHC	1:50-1:200

Data



Immunohistochemistry of paraffin-embedded Human liver cancer tissue using Connexin-45 Polyclonal Antibody at dilution 1:50



Immunohistochemistry of paraffin-embedded Human thyroid cancer tissue using Connexin-45 Polyclonal Antibody at dilution 1:50

Preparation & Storage

Storage	Store at -20°C Valid for 12 months. Avoid freeze / thaw cycles.
Shipping	The product is shipped with ice pack, upon receipt, store it immediately at the temperature recommended.

Background

This gene is a member of the connexin gene family. The encoded protein is a component of gap junctions, which are composed of arrays of intercellular channels that provide a route for the diffusion of low molecular weight materials from cell to cell. Alternatively spliced transcript variants encoding the same isoform have been described.

For Research Use Only