

SEPT2 Polyclonal Antibody

catalog number: E-AB-17022

Note: Centrifuge before opening to ensure complete recovery of vial contents.

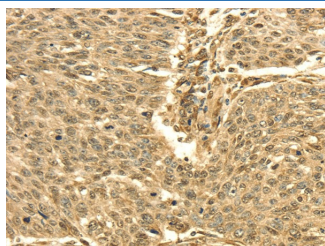
Description

Reactivity	Human;Mouse;Rat
Immunogen	Full length fusion protein
Host	Rabbit
Isotype	IgG
Purification	Affinity purification
Buffer	Phosphate buffered solution, pH 7.4, containing 0.05% stabilizer and 50% glycerol.

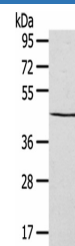
Applications Recommended Dilution

WB	1:200-1000
IHC	1:25-100

Data



Immunohistochemistry of paraffin-embedded Human lung cancer using SEPT2 Polyclonal Antibody at dilution of 1/30



Western Blot analysis of HepG2 cells using SEPT2 Polyclonal Antibody at dilution of 1/400

Calculated-MW:41 kDa

Preparation & Storage

Storage	Store at -20°C Valid for 12 months. Avoid freeze / thaw cycles.
Shipping	The product is shipped with ice pack, upon receipt, store it immediately at the temperature recommended.

Background

Filament-forming cytoskeletal GTPase. Required for normal organization of the actin cytoskeleton. Plays a role in the biogenesis of polarized columnar-shaped epithelium by maintaining polyglutamylated microtubules, thus facilitating efficient vesicle transport, and by impeding MAP4 binding to tubulin. Required for the progression through mitosis.

For Research Use Only