

Bcl-2 Polyclonal Antibody

catalog number: **E-AB-93166**

Note: Centrifuge before opening to ensure complete recovery of vial contents.

Description

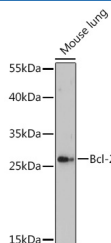
| | |
|---------------------|--|
| Reactivity | Human;Mouse;Rat |
| Immunogen | Recombinant fusion protein of human Bcl-2 |
| Host | Rabbit |
| Isotype | IgG |
| Purification | Affinity purification |
| Buffer | Phosphate buffered solution, pH 7.4, containing 0.05% stabilizer and 50% glycerol. |

Applications

Recommended Dilution

| | |
|-----------|--------------|
| WB | 1:500-1:2000 |
| IF | 1:50-1:200 |

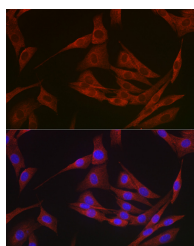
Data



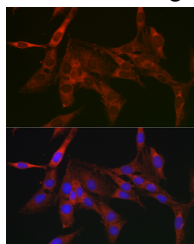
Western blot analysis of extracts of Mouse lung using Bcl-2 Polyclonal Antibody at 1:500 dilution.

Observed-MW:26 kDa

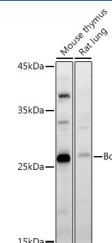
Calculated-MW:22 kDa/26 kDa



Immunofluorescence analysis of NIH/3T3 cells using Bcl-2 Polyclonal Antibody at dilution of 1:200. Blue: DAPI for nuclear staining.



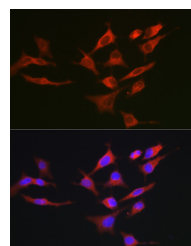
Immunofluorescence analysis of C6 cells using Bcl-2 Polyclonal Antibody at dilution of 1:200. Blue: DAPI for nuclear staining.



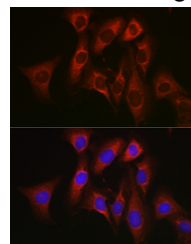
Western blot analysis of extracts of various cell lines using Bcl-2 Polyclonal Antibody at 1:1000 dilution.

Observed-MW:26 kDa

Calculated-MW:22 kDa/26 kDa

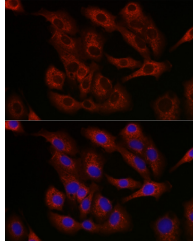


Immunofluorescence analysis of HeLa cells using Bcl-2 Polyclonal Antibody at dilution of 1:200. Blue: DAPI for nuclear staining.



Immunofluorescence analysis of U2OS cells using Bcl-2 Polyclonal Antibody at dilution of 1:200. Blue: DAPI for nuclear staining.

For Research Use Only



Immunofluorescence analysis of A-549 cells using Bcl-2 Polyclonal Antibody at dilution of 1:200. Blue: DAPI for nuclear staining.

Preparation & Storage

Storage

Store at -20°C Valid for 12 months. Avoid freeze / thaw cycles.

Shipping

The product is shipped with ice pack, upon receipt, store it immediately at the temperature recommended.

Background

This gene encodes an integral outer mitochondrial membrane protein that blocks the apoptotic death of some cells such as lymphocytes. Constitutive expression of BCL2, such as in the case of translocation of BCL2 to Ig heavy chain locus, is thought to be the cause of follicular lymphoma. Alternative splicing results in multiple transcript variants.

For Research Use Only