

# Recombinant Mouse CXCL15/Lungkine Protein (His Tag)



Catalog Number:PKSM040994

**Note:** Centrifuge before opening to ensure complete recovery of vial contents.

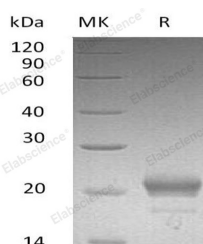
## Description

<b>Synonyms</b>	C-X-C motif chemokine 15;Cxcl15;Lungkine;Small-inducible cytokine B15;Scyb15
<b>Species</b>	Mouse
<b>Expression Host</b>	HEK293 Cells
<b>Sequence</b>	Gln26-Ala167
<b>Accession</b>	Q9WVL7
<b>Calculated Molecular Weight</b>	17.4 kDa
<b>Observed molecular weight</b>	20-22 kDa
<b>Tag</b>	C-His

## Properties

<b>Purity</b>	> 95 % as determined by reducing SDS-PAGE.
<b>Endotoxin</b>	< 1.0 EU per µg of the protein as determined by the LAL method.
<b>Storage</b>	Generally, lyophilized proteins are stable for up to 12 months when stored at -20 to -80°C. Reconstituted protein solution can be stored at 4-8°C for 2-7 days. Aliquots of reconstituted samples are stable at < -20°C for 3 months.
<b>Shipping</b>	This product is provided as lyophilized powder which is shipped with ice packs.
<b>Formulation</b>	Lyophilized from a 0.2 µm filtered solution of PBS, pH 7.4. Normally 5 % - 8 % trehalose, mannitol and 0.01% Tween80 are added as protectants before lyophilization. Please refer to the specific buffer information in the printed manual.
<b>Reconstitution</b>	Please refer to the printed manual for detailed information.

## Data



> 95 % as determined by reducing SDS-PAGE.

## Background

Mouse C-X-C motif chemokine 15, also known as Cxcl15, is a secreted protein which is member of the ELR motif-containing CXC chemokines. It expressed at low levels in fetal lung, the expression restricted to the lung, produced by bronchoepithelial cells and is released into the airways. It plays an important role in lung-specific neutrophil trafficking during normal and inflammatory conditions. It also appears chemotactic for neutrophils.

## For Research Use Only

A Reliable Research Partner in Life Science and Medicine

Toll-free: 1-888-852-8623

Web: [www.elabscience.com](http://www.elabscience.com)

Tel: 1-832-243-6086

Email: [techsupport@elabscience.com](mailto:techsupport@elabscience.com)

Fax: 1-832-243-6017