

## Recombinant GLUT2 Monoclonal Antibody

catalog number: **AN301695L**

**Note:** Centrifuge before opening to ensure complete recovery of vial contents.

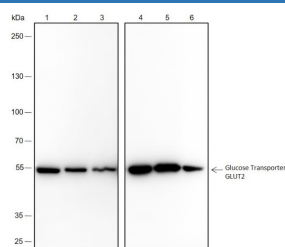
### Description

<b>Reactivity</b>	Human;Rat;Mouse
<b>Immunogen</b>	Recombinant human GLUT2 fragment
<b>Host</b>	Rabbit
<b>Isotype</b>	IgG, $\kappa$
<b>Clone</b>	A403
<b>Purification</b>	Protein A purified
<b>Buffer</b>	PBS, 50% glycerol, 0.05% Proclin 300, 0.05% protein protectant.

### Applications

<b>WB</b>	1:500-1:1000
<b>FCM</b>	1:50

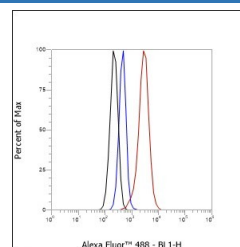
### Data



Western Blot with GLUT2 Monoclonal Antibody at dilution of 1:1000. Lane 1: HepG2, Lane 2: HUVEC, Lane 3: NIH-3T3, Lane 4: RAW264.7, Lane 5: C6, Lane 6: PC-12

**Observed-MW:55 kDa**

**Calculated-MW:57 kDa**



Flow cytometric analysis of human GLUT2 expression on HepG2 cells. Cells were stained with purified anti-Human GLUT2, then a Alexa Fluor 488-conjugated second step antibody. The histogram were derived from events with the forward and side light-scatter characteristics of intact cells.

### Preparation & Storage

<b>Storage</b>	Store at -20°C Valid for 12 months. Avoid freeze / thaw cycles.
<b>Shipping</b>	Ice bag

### Background

GLUT2 is a facilitative hexose transporter that mediates the transport of glucose and fructose, which likely mediates the bidirectional transfer of glucose across the plasma membrane of hepatocytes and is responsible for uptake of glucose by the beta cells; may comprise part of the glucose-sensing mechanism of the beta cell. GLUT2 may participate with the Na<sup>+</sup>/glucose cotransporter in the transcellular transport of glucose in the small intestine and kidney and is also able to mediate the transport of dehydroascorbate.

### For Research Use Only

Toll-free: 1-888-852-8623  
Web: [www.elabscience.com](http://www.elabscience.com)

Tel: 1-832-243-6086  
Email: [techsupport@elabscience.com](mailto:techsupport@elabscience.com)

Fax: 1-832-243-6017

Rev. V1.0