

Recombinant Phospho-Tau (Ser199) Monoclonal Antibody

catalog number: **AN302079L**

Note: Centrifuge before opening to ensure complete recovery of vial contents.

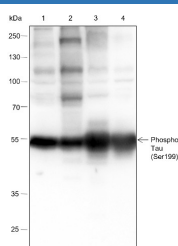
Description

Reactivity	Human;Rat;Mouse
Immunogen	phosphorylated human Tau (Ser199) peptide
Host	Rabbit
Isotype	IgG, κ
Clone	A803
Purification	Protein A purified
Buffer	PBS, 50% glycerol, 0.05% Proclin 300, 0.05% protein protectant.

Applications

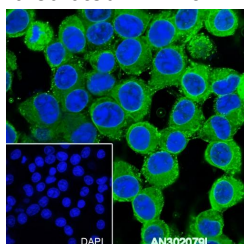
Applications	Recommended Dilution
WB	1:1000-1:3000
IHC	1:200-1:1000
IF	1:50
FCM	1:50-1:100

Data

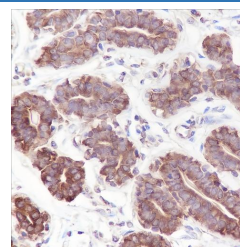


Western Blot with Phospho-Tau (Ser199) Monoclonal Antibody at dilution of 1:3000. Lane 1: SH-SY5Y, Lane 2: SH-SY5Y+OA+CA (+), Lane 3: Rat brain, Lane 4: Mouse brain

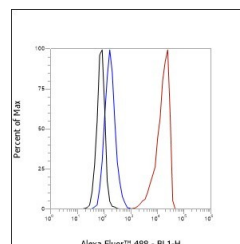
Observed-MW:55 kDa
Calculated-MW:79 kDa



Immunofluorescent analysis of (100% Ice-cold methanol) fixed Neuro-2a cells using anti-Phospho-Tau (Ser199) Monoclonal Antibody at dilution of 1:50.



Immunohistochemistry of paraffin-embedded Human breast using Phospho-Tau (Ser199) Monoclonal Antibody at dilution of 1:1000.



Flow cytometric analysis of human Phospho-Tau (Ser199) expression on SH-SY5Y cells. Cells were stained with purified anti-Human Phospho-Tau (Ser199), then a Alexa Fluor 488-conjugated second step antibody. The histogram were derived from events with the forward and side light-scatter characteristics of intact cells.

Preparation & Storage

Storage Store at -20°C Valid for 12 months. Avoid freeze / thaw cycles.

For Research Use Only

Toll-free: 1-888-852-8623
Web: www.elabscience.com

Tel: 1-832-243-6086
Email: techsupport@elabscience.com

Fax: 1-832-243-6017

Rev. V1.0

Shipping

Ice bag

Background

Promotes microtubule assembly and stability and might be involved in the establishment and maintenance of neuronal polarity. The C-terminus binds axonal microtubules while the N-terminus binds neural plasma membrane components, suggesting that tau functions as a linker protein between both. Axonal polarity is predetermined by TAU/MAPT localization (in the neuronal cell) in the domain of the cell body defined by the centrosome. The short isoforms allow plasticity of the cytoskeleton whereas the longer isoforms may preferentially play a role in its stabilization.

For Research Use Only

Toll-free: 1-888-852-8623
Web: www.elabscience.com

Tel: 1-832-243-6086
Email: techsupport@elabscience.com

Fax: 1-832-243-6017

Rev. V1.0