

Recombinant Ki67 Monoclonal Antibody

catalog number: **AN301074L**

Note: Centrifuge before opening to ensure complete recovery of vial contents.

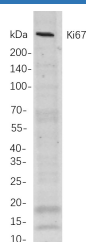
Description

Reactivity	Human;Mouse;Rat
Immunogen	Recombinant Human Ki67 protein
Host	Rabbit
Isotype	IgG, κ
Clone	B829
Purification	Protein A
Buffer	PBS, 50% glycerol, 0.05% Proclin 300, 0.05% protein protectant.

Applications

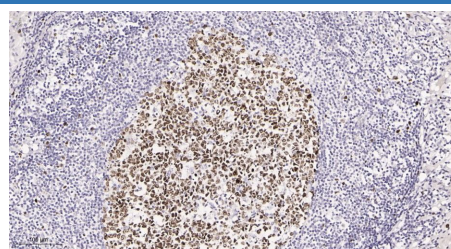
Applications	Recommended Dilution
IHC	1:200-1000
WB	1:1000-5000
IF	1:200-1000
ELISA	1:5000-20000

Data

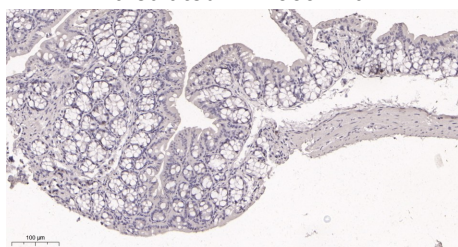


Western Blot with Recombinant Ki67 Monoclonal Antibody at dilution of 1:1000 dilution. Lane A: HeLa cells.

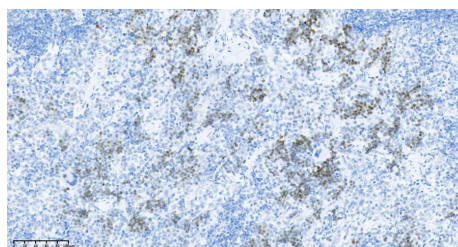
Observed-MW:359 kDa
Calculated-MW:359 kDa



Immunohistochemistry of paraffin-embedded human appendix tissue using Recombinant Ki67 Monoclonal Antibody at dilution of 1:200.



Immunohistochemistry of paraffin-embedded mouse colon tissue using Recombinant Ki67 Monoclonal Antibody at dilution of 1:200.



Immunohistochemistry of paraffin-embedded rat spleen tissue using Recombinant Ki67 Monoclonal Antibody at dilution of 1:200.

Preparation & Storage

Storage	Store at -20°C Valid for 12 months. Avoid freeze / thaw cycles.
Shipping	Ice bag

Background

This gene encodes a nuclear protein that is associated with and may be necessary for cellular proliferation. Alternatively spliced transcript variants have been described. A related pseudogene exists on chromosome X.

For Research Use Only

Toll-free: 1-888-852-8623
Web: www.elabscience.com

Tel: 1-832-243-6086
Email: techsupport@elabscience.com

Fax: 1-832-243-6017

Rev. V1.2