

## Recombinant Phospho-AMPK $\alpha$ (Thr172) Monoclonal Antibody

catalog number: **AN300369L**

**Note:** Centrifuge before opening to ensure complete recovery of vial contents.

### Description

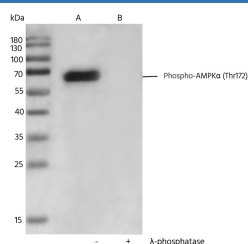
<b>Reactivity</b>	Human
<b>Immunogen</b>	A synthetic peptide corresponding to the residues around
<b>Host</b>	Rabbit
<b>Isotype</b>	IgG
<b>Clone</b>	B291
<b>Purification</b>	Protein A
<b>Buffer</b>	10 mM sodium HEPES, 150 mM NaCl, 100 $\mu$ g/mL protein protectant, 50% glycerol, pH 7.5

### Applications

### Recommended Dilution

<b>WB</b>	1:2000-1:20000
-----------	----------------

### Data



Western blot analysis of extracts from Rat brain, untreated (line A); treated with  $\lambda$ -phosphatase (line B) using Phospho-AMPK $\alpha$  (Thr172) rabbit monoclonal Antibody at 1:2000 dilution..

**Observed-MW:67 kDa**

**Calculated-MW:62 kDa**

### Preparation & Storage

<b>Storage</b>	This antibody can be stored at 2°C-8°C for one month without detectable loss of activity. Antibody products are stable for twelve months from date of receipt when stored at -20°C to -80°C. Preservative-Free. Avoid repeated freeze-thaw cycles.
<b>Shipping</b>	Ice bag

### Background

The protein encoded by this gene belongs to the ser/thr protein kinase family. It is the catalytic subunit of the 5'-prime-AMP-activated protein kinase (AMPK). AMPK is a cellular energy sensor conserved in all eukaryotic cells. The kinase activity of AMPK is activated by the stimuli that increase the cellular AMP/ATP ratio. AMPK regulates the activities of a number of key metabolic enzymes through phosphorylation. It protects cells from stresses that cause ATP depletion by switching off ATP-consuming biosynthetic pathways. Alternatively spliced transcript variants encoding distinct isoforms have been observed.

### For Research Use Only