

LYZ Monoclonal Antibody

catalog number: AN200198P

Note: Centrifuge before opening to ensure complete recovery of vial contents.

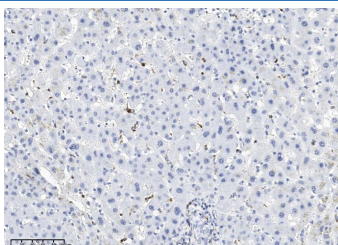
Description

Reactivity	Human
Immunogen	A synthetic peptide corresponding to the center region of the Human LYZ
Host	Mouse
Isotype	IgG1
Clone	12G11
Purification	Protein A
Buffer	0.2 µm filtered solution in PBS

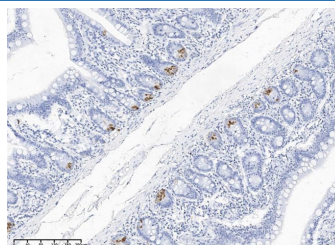
Applications Recommended Dilution

IHC-P	1:100-1:500
--------------	-------------

Data



Immunohistochemistry of paraffin-embedded human liver using LYZ Monoclonal Antibody at dilution of 1:200.



Immunohistochemistry of paraffin-embedded human small intestine using LYZ Monoclonal Antibody at dilution of 1:200.

Preparation & Storage

Storage	This antibody can be stored at 2°C-8°C for one month without detectable loss of activity. Antibody products are stable for twelve months from date of receipt when stored at -20°C to -80°C. Preservative-Free. Avoid repeated freeze-thaw cycles.
Shipping	Ice bag

Background

This gene encodes human lysozyme, whose natural substrate is the bacterial cell wall peptidoglycan (cleaving the beta[1-4]glycosidic linkages between N-acetylmuramic acid and N-acetylglucosamine). Lysozyme is one of the antimicrobial agents found in human milk, and is also present in spleen, lung, kidney, white blood cells, plasma, saliva, and tears. The protein has antibacterial activity against a number of bacterial species. Missense mutations in this gene have been identified in heritable renal amyloidosis.

For Research Use Only

Toll-free: 1-888-852-8623
Web: www.elabscience.com

Tel: 1-832-243-6086
Email: techsupport@elabscience.com

Fax: 1-832-243-6017

Rev. V1.0