

## SLC1A6 Polyclonal Antibody

**catalog number: E-AB-12378**

**Note:** Centrifuge before opening to ensure complete recovery of vial contents.

### Description

<b>Reactivity</b>	Human;Mouse;Rat
<b>Immunogen</b>	Synthetic peptide of human SLC1A6
<b>Host</b>	Rabbit
<b>Isotype</b>	IgG
<b>Purification</b>	Affinity purification
<b>Buffer</b>	Phosphate buffered solution, pH 7.4, containing 0.05% stabilizer and 50% glycerol.

### Applications

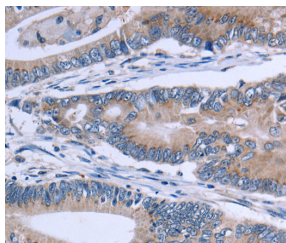
Applications	Recommended Dilution
<b>WB</b>	1:500-1:1000
<b>IHC</b>	1:25-1:100

### Data

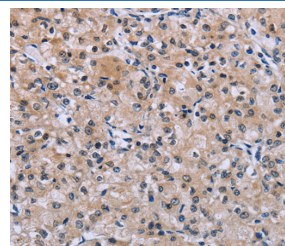


Western Blot analysis of Mouse brain tissue using SLC1A6 Polyclonal Antibody at dilution of 1:600

**Calculated-MV:62 kDa**



Immunohistochemistry of paraffin-embedded Human colon cancer using SLC1A6 Polyclonal Antibody at dilution of 1:40



Immunohistochemistry of paraffin-embedded Human prostate cancer using SLC1A6 Polyclonal Antibody at dilution of 1:40

### Preparation & Storage

<b>Storage</b>	Store at -20°C Valid for 12 months. Avoid freeze / thaw cycles.
<b>Shipping</b>	The product is shipped with ice pack, upon receipt, store it immediately at the temperature recommended.

### Background

Excitatory amino-acid transporter 4 (EAAT4) is a protein that in humans is encoded by the SLC1A6 gene. It is a member of the high-affinity glutamate and neutral amino acid-transporter family. It transports L-glutamate and also L- and D-aspartate predominantly in the cerebellar cortex. Genetic polymorphism in the SLC1A6 gene is suggested to be referred to glutamatergic dysfunction in schizophrenia pathogenesis.

### For Research Use Only