

# Cyt-C Polyclonal Antibody

catalog number: D-AB-10419L

**Note:** Centrifuge before opening to ensure complete recovery of vial contents.

## Description

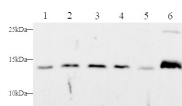
<b>Reactivity</b>	Human;Mouse
<b>Immunogen</b>	Recombinant Human Cyt-C protein expressed by E.coli
<b>Host</b>	Rabbit
<b>Isotype</b>	IgG
<b>Purification</b>	Antigen Affinity Purification
<b>Conjugation</b>	Unconjugated
<b>buffer</b>	PBS with 0.05% proclin 300, 1% protective protein and 50% glycerol,pH7.4

## Applications

## Recommended Dilution

<b>WB</b>	1:250-1:500
-----------	-------------

## Data



Western blot with Cyt-C Polyclonal antibody at dilution of 1:500.lane 1:HepG2 whole cell lysate,lane 2:MCF-7 whole cell lysate,lane 3:Jurkat whole cell lysate,lane 4:Molt-4 whole cell lysate,lane 5:C2C12 whole cell lysate,lane 6:Mouse brain

**Observed-MV:14 kDa**

**Calculated-MV:12 kDa**

## Preparation & Storage

<b>Storage</b>	Store at -20°C Valid for 12 months. Avoid freeze / thaw cycles.
<b>Shipping</b>	The product is shipped with ice pack,upon receipt,store it immediately at the temperature recommended.

## Background

Cytochrome c is a 12-15 kDa electron transporting protein located in the inner mitochondrial membrane. As a part of respiratory chain,cytochrome c plays a critical role in the process of oxidative phosphorylation and ATP producing. Besides,cytochrome c also gets implicated in apoptosis process. Upon apoptotic stimulation,cytochrome c can be released from mitochondria into cytoplasm,which is required for caspase-3 activation and the occurrence of apoptosis.

## For Research Use Only