

Recombinant HLA-DRB1 Monoclonal Antibody

catalog number: **AN301553L**

Note: Centrifuge before opening to ensure complete recovery of vial contents.

Description

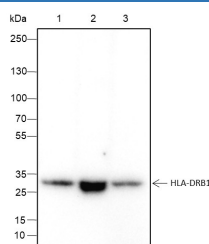
Reactivity	Human;
Immunogen	Recombinant human HLA-DRB1 fragment
Host	Rabbit
Isotype	IgG, κ
Clone	A252
Purification	Protein A purified
Buffer	PBS, 50% glycerol, 0.05% Proclin 300, 0.05% protein protectant.

Applications

Recommended Dilution

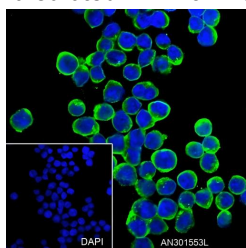
WB	1:500-1:1000
IF	1:50
FCM	1:50-1:100

Data

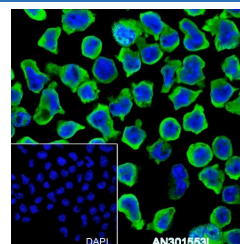


Western Blot with HLA-DRB1 Monoclonal Antibody at dilution of 1:1000. Lane 1: Raji, Lane 2: Ramos, Lane 3: Daudi

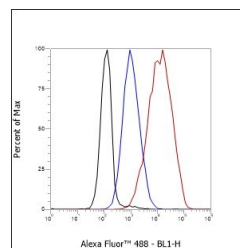
Observed-MW:29 kDa
Calculated-MW:29 kDa



Immunofluorescent analysis of (100% Ice-cold methanol) fixed Ramos cells using anti-HLA-DRB1 Monoclonal Antibody at dilution of 1:50.



Immunofluorescent analysis of (4% Paraformaldehyde) fixed EL4 cells using anti-HLA-DRB1 Monoclonal Antibody at dilution of 1:50.



Flow cytometric analysis of human HLA-DRB1 expression on Raji cells. Cells were stained with purified anti-Human HLA-DRB1, then a Alexa Fluor 488-conjugated second step antibody. The histogram were derived from events with the forward and side light-scatter characteristics of intact cells.

Preparation & Storage

Storage	Store at -20°C Valid for 12 months. Avoid freeze / thaw cycles.
Shipping	Ice bag

Background

For Research Use Only

Toll-free: 1-888-852-8623
Web: www.elabscience.com

Tel: 1-832-243-6086
Email: techsupport@elabscience.com

Fax: 1-832-243-6017

Rev. V1.0

A beta chain of antigen-presenting major histocompatibility complex class II (MHCII) molecule. In complex with the alpha chain HLA-DRA, displays antigenic peptides on professional antigen presenting cells (APCs) for recognition by alpha-beta T cell receptor (TCR) on HLA-DRB1-restricted CD4-positive T cells.

For Research Use Only

Toll-free: 1-888-852-8623

Web: www.elabscience.com

Tel: 1-832-243-6086

Email: techsupport@elabscience.com

Fax: 1-832-243-6017

Rev. V1.0