

# SCAF8 Polyclonal Antibody

Catalog Number:E-AB-92158



**Note:** Centrifuge before opening to ensure complete recovery of vial contents.

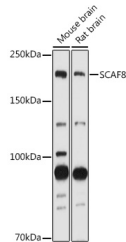
## Description

<b>Reactivity</b>	Human,Mouse,Rat
<b>Immunogen</b>	Recombinant fusion protein of human SCAF8
<b>Host</b>	Rabbit
<b>Isotype</b>	IgG
<b>Purification</b>	Affinity purification
<b>Conjugation</b>	Unconjugated
<b>Formulation</b>	PBS with 0.05% proclin300,50% glycerol,pH7.3.

## Applications Recommended Dilution

<b>WB</b>	1:500-1:1000
-----------	--------------

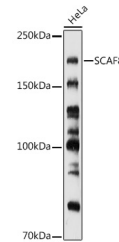
## Data



Western blot analysis of extracts of various cell lines using SCAF8 Polyclonal Antibody at 1:1000 dilution.

**Observed Mw:170KDa**

**Calculated Mw:140kDa/147kDa**



Western blot analysis of extracts of HeLa cells using SCAF8 Polyclonal Antibody at 1:1000 dilution.

## Preparation & Storage

**Storage** Store at -20°C. Avoid freeze/thaw cycles.

## Background

Anti-terminator protein required to prevent early mRNA termination during transcription. Together with SCAF4, acts by suppressing the use of early, alternative poly(A sites, thereby preventing the accumulation of non-functional truncated proteins. Mechanistically, associates with the phosphorylated C-terminal heptapeptide repeat domain (CTD of the largest RNA polymerase II subunit (POLR2A, and subsequently binds nascent RNA upstream of early polyadenylation sites to prevent premature mRNA transcript cleavage and polyadenylation. Independently of SCAF4, also acts as a positive regulator of transcript elongation.

## For Research Use Only

A Reliable Research Partner in Life Science and Medicine

Toll-free: 1-888-852-8623

Web: [www.elabscience.com](http://www.elabscience.com)

Tel: 1-832-243-6086

Email: [techsupport@elabscience.com](mailto:techsupport@elabscience.com)

Fax: 1-832-243-6017