

Recombinant Human HPCAL1 Protein (His Tag)

Catalog Number: PKSH032547

Note: Centrifuge before opening to ensure complete recovery of vial contents.

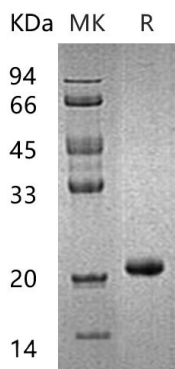
Description

Species	Human
Source	E.coli-derived Human HPCAL1 protein Met 1-Phe193, with an N-terminal His
Calculated MW	24.5 kDa
Observed MW	21 kDa
Accession	P37235
Bio-activity	Not validated for activity

Properties

Purity	> 95 % as determined by reducing SDS-PAGE.
Concentration	Subject to label value.
Endotoxin	< 1.0 EU per µg of the protein as determined by the LAL method.
Storage	Store at < -20°C, stable for 6 months. Please minimize freeze-thaw cycles.
Shipping	This product is provided as liquid. It is shipped at frozen temperature with blue ice/ gel packs. Upon receipt, store it immediately at < - 20°C.
Formulation	Supplied as a 0.2 µm filtered solution of 20mM Tris-HCl, 200mM NaCl, 1mM DTT, 10% Glycerol, pH 8.0.

Data



> 95 % as determined by reducing SDS-PAGE.

Background

Hippocalcin-Like Protein 1 (HPCAL1) is a neuron-specific calcium-binding member of the recoverin family which found in the retina and brain. HPCAL1 contains four EF-hand domains and it is highly similar to human hippocalcin protein. HPCAL1 is involved in the calcium-dependent regulation of rhodopsin phosphorylation. In addition, it may be of relevance for neuronal signalling in the central nervous system.

For Research Use Only

Toll-free: 1-888-852-8623
Web: www.elabscience.com

Tel: 1-832-243-6086
Email: techsupport@elabscience.com

Fax: 1-832-243-6017