

RPE Polyclonal Antibody

catalog number: E-AB-65107

Note: Centrifuge before opening to ensure complete recovery of vial contents.

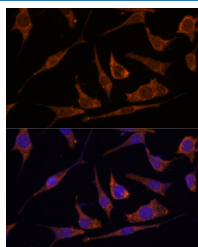
Description

Reactivity	Human;Mouse;Rat
Immunogen	Recombinant fusion protein of human RPE (NP_954699.1).
Host	Rabbit
Isotype	IgG
Purification	Affinity purification
Buffer	Phosphate buffered solution, pH 7.4, containing 0.05% stabilizer and 50% glycerol.

Applications

Applications	Recommended Dilution
IF	1:50-1:100

Data



Immunofluorescence analysis of L929 cells using RPE Polyclonal Antibody at dilution of 1:100 (40x lens). Blue: DAPI for nuclear staining.

Preparation & Storage

Storage	Store at -20°C Valid for 12 months. Avoid freeze / thaw cycles.
Shipping	The product is shipped with ice pack, upon receipt, store it immediately at the temperature recommended.

Background

RPE (Ribulose-5-Phosphate-3-Epimerase) is a Protein Coding gene. Diseases associated with RPE include Cardiomyopathy, Familial Restrictive, 2. Among its related pathways are Pentose phosphate pathway and Metabolism. Gene Ontology (GO) annotations related to this gene include protein homodimerization activity and racemase and epimerase activity, acting on carbohydrates and derivatives. An important paralog of this gene is RPEL1.

For Research Use Only