

Recombinant Human Statherin/STATH Protein (Fc Tag)

Catalog Number: PKSH030572

Note: Centrifuge before opening to ensure complete recovery of vial contents.

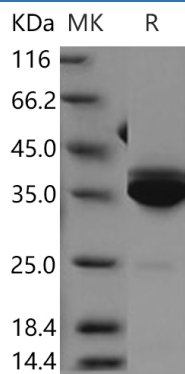
Description

Species	Human
Mol_Mass	31.6 kDa
Accession	P02808-1
Bio-activity	Not validated for activity

Properties

Purity	> 95 % as determined by reducing SDS-PAGE.
Endotoxin	< 1.0 EU per µg of the protein as determined by the LAL method.
Storage	Generally, lyophilized proteins are stable for up to 12 months when stored at -20 to -80 °C. Reconstituted protein solution can be stored at 4-8°C for 2-7 days. Aliquots of reconstituted samples are stable at < -20°C for 3 months.
Shipping	This product is provided as lyophilized powder which is shipped with ice packs.
Formulation	Lyophilized from sterile PBS, pH 7.4 Normally 5% - 8% trehalose, mannitol and 0.01% Tween 80 are added as protectants before lyophilization. Please refer to the specific buffer information in the printed manual.
Reconstitution	Please refer to the printed manual for detailed information.

Data



> 95 % as determined by reducing SDS-PAGE.

Background

Statherin, also known as STATH, belongs to the histatin/statherin family. Statherin may play an important role in the maintenance of oral health. It prevents calcium phosphate precipitation in saliva, so maintaining a high calcium level in saliva and preventing teeth from dissolving. Statherin also inhibits spontaneous precipitation of calcium phosphate salts. Thus, statherin and PRPs may prevent build-up of harmful deposits in the salivary glands and on the tooth surfaces. Statherin is a highly stable salivary protein of low molecular mass (5,380). Sabatini et al. synthesized mixed oligonucleotides based on the known amino acid sequence of statherin and used these to screen a cDNA library constructed from human parotid gland mRNA.

For Research Use Only

Toll-free: 1-888-852-8623
Web: www.elabscience.com

Tel: 1-832-243-6086
Email: techsupport@elabscience.com

Fax: 1-832-243-6017