

GAS8 Polyclonal Antibody

catalog number: E-AB-16451

Note: Centrifuge before opening to ensure complete recovery of vial contents.

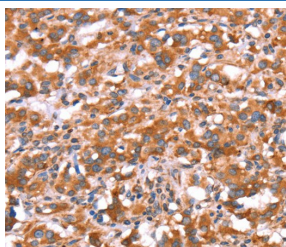
Description

Reactivity	Human;Mouse;Rat
Immunogen	Synthetic peptide of human GAS8
Host	Rabbit
Isotype	IgG
Purification	Affinity purification
Buffer	Phosphate buffered solution, pH 7.4, containing 0.05% stabilizer and 50% glycerol.

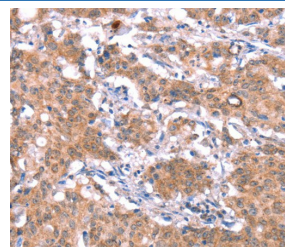
Applications Recommended Dilution

IHC	1:25-1:100
------------	------------

Data



Immunohistochemistry of paraffin-embedded Human thyroid cancer tissue using GAS8 Polyclonal Antibody at dilution 1:30



Immunohistochemistry of paraffin-embedded Human gastric cancer tissue using GAS8 Polyclonal Antibody at dilution 1:30

Preparation & Storage

Storage	Store at -20°C Valid for 12 months. Avoid freeze / thaw cycles.
Shipping	The product is shipped with ice pack, upon receipt, store it immediately at the temperature recommended.

Background

This gene includes 11 exons spanning 25 kb and maps to a region of chromosome 16 that is sometimes deleted in breast and prostate cancer. The second intron contains an apparently intronless gene, C16orf3, that is transcribed in the opposite orientation. This gene is a putative tumor suppressor gene. Several transcript variants encoding different isoforms have been found for this gene.

For Research Use Only