

YTHDF1 Polyclonal Antibody

catalog number: E-AB-53547

Note: Centrifuge before opening to ensure complete recovery of vial contents.

Description

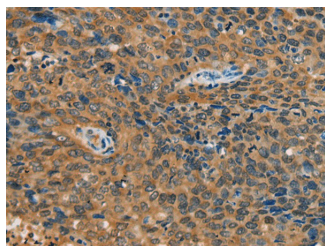
Reactivity	Human;Mouse
Immunogen	Synthetic peptide of human YTHDF1
Host	Rabbit
Isotype	IgG
Purification	Antigen affinity purification
Conjugation	Unconjugated
buffer	Phosphate buffered solution, pH 7.4, containing 0.05% stabilizer and 50% glycerol.

Applications

Recommended Dilution

IHC	1:40-1:200
------------	------------

Data



Immunohistochemistry of paraffin-embedded Human cervical cancer tissue using YTHDF1 Polyclonal Antibody at dilution of 1:55($\times 200$)

Preparation & Storage

Storage	Store at -20°C Valid for 12 months. Avoid freeze / thaw cycles.
Shipping	The product is shipped with ice pack, upon receipt, store it immediately at the temperature recommended.

Background

YTHDF1 (YTH N6-Methyladenosine RNA Binding Protein 1) is a Protein Coding gene. GO annotations related to this gene include poly(A) RNA binding and N6-methyladenosine-containing RNA binding. An important paralog of this gene is YTHDF3.

For Research Use Only