

SOD1 Polyclonal Antibody

catalog number: E-AB-40047

Note: Centrifuge before opening to ensure complete recovery of vial contents.

Description

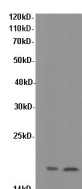
Reactivity	Human
Immunogen	Recombinant Human Superoxide dismutase protein
Host	Rabbit
Isotype	IgG
Purification	Antigen Affinity Purification
Conjugation	Unconjugated
buffer	PBS with 0.05% proclin 300, 1% protective protein and 50% glycerol,pH7.4

Applications

Recommended Dilution

WB	1:500-1:1000
-----------	--------------

Data



Western Blot analysis of HeLa and K562 cells using SOD1

Polyclonal Antibody at dilution of 1:600

Observed-MV:17 kDa

Calculated-MV:17 kDa

Preparation & Storage

Storage	Store at -20°C Valid for 12 months. Avoid freeze / thaw cycles.
Shipping	The product is shipped with ice pack,upon receipt,store it immediately at the temperature recommended.

Background

Destroys radicals which are normally produced within the cells and which are toxic to biological systems.

For Research Use Only