

Recombinant Human Carboxypeptidase B1/CPB1 Protein (His Tag)



Catalog Number:PKSH032171

Note: Centrifuge before opening to ensure complete recovery of vial contents.

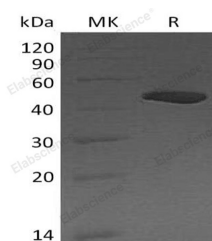
Description

Synonyms	Carboxypeptidase B;Pancreas-Specific Protein;PASP;CPB1;CPB;PCPB
Species	Human
Expression Host	HEK293 Cells
Sequence	His16-Tyr417
Accession	P15086
Calculated Molecular Weight	46.9 kDa
Observed molecular weight	47 kDa
Tag	C-His

Properties

Purity	> 95 % as determined by reducing SDS-PAGE.
Endotoxin	< 1.0 EU per µg of the protein as determined by the LAL method.
Storage	Store at < -20°C, stable for 6 months. Please minimize freeze-thaw cycles.
Shipping	This product is provided as liquid. It is shipped at frozen temperature with blue ice/gel packs. Upon receipt, store it immediately at < - 20°C.
Formulation	Supplied as a 0.2 µm filtered solution of 20mM MES, 150mM NaCl, pH 5.5.
Reconstitution	Not Applicable

Data



> 95 % as determined by reducing SDS-PAGE.

Background

Carboxypeptidase B1 is an exopeptidase which specifically cleaves the C-terminal Arg and Lys residues with a preference for Arg. Expressed mainly in pancreas, CPB1 is a useful serum marker for acute pancreatitis and pancreatic graft rejection. Human CPB1 consists of a signal peptide, a pro region, and a mature chain. The purified rhCPB1 corresponds to the pro form, which can be activated by trypsin, the only pancreatic protease capable of generating active enzyme from the zymogen in vitro.

For Research Use Only

A Reliable Research Partner in Life Science and Medicine

Toll-free: 1-888-852-8623

Web: www.elabscience.com

Tel: 1-832-243-6086

Email: techsupport@elabscience.com

Fax: 1-832-243-6017