

Cleaved-PARP1 (D214) Polyclonal Antibody

catalog number: E-AB-30080

Note: Centrifuge before opening to ensure complete recovery of vial contents.

Description

| | |
|---------------------|---|
| Reactivity | Human;Mouse |
| Immunogen | Synthesized peptide derived from the Internal region of human PARP-1 |
| Host | Rabbit |
| Isotype | IgG |
| Purification | Affinity purification |
| Conjugation | Unconjugated |
| Buffer | Phosphate buffered solution, pH 7.4, containing 0.05% stabilizer, 0.5% protein protectant and 50% glycerol. |

Applications

| Applications | Recommended Dilution |
|--------------|----------------------|
| WB | 1:500-2000 |
| IHC | 1:50-300 |
| IF | 1:50-300 |

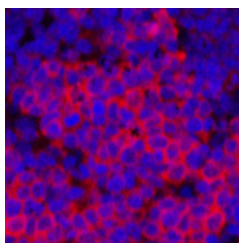
Data



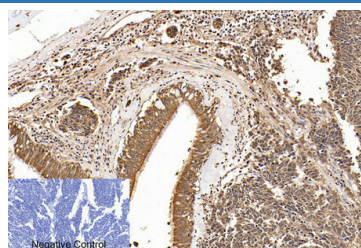
Western Blot analysis of A549 cells using Cleaved-PARP1 (D214) Polyclonal Antibody at dilution of 1:2000.

Observed-MW:24 kDa

Calculated-MW:113 kDa



Immunofluorescence analysis of Rat spleen tissue using Cleaved-PARP1 (D214) Polyclonal Antibody at dilution of 1:200.



Immunohistochemistry of paraffin-embedded Human lung cancer tissue using Cleaved-PARP1 (D214) Polyclonal Antibody at dilution of 1:200.

Preparation & Storage

| | |
|-----------------|--|
| Storage | Store at -20°C Valid for 12 months. Avoid freeze / thaw cycles. |
| Shipping | The product is shipped with ice pack, upon receipt, store it immediately at the temperature recommended. |

Background

For Research Use Only

This gene encodes a chromatin-associated enzyme, poly(ADP-ribosyl)transferase, which modifies various nuclear proteins by poly(ADP-ribosyl)ation. The modification is dependent on DNA and is involved in the regulation of various important cellular processes such as differentiation, proliferation, and tumor transformation and also in the regulation of the molecular events involved in the recovery of cell from DNA damage. In addition, this enzyme may be the site of mutation in Fanconi anemia, and may participate in the pathophysiology of type I diabetes.