

## BCL10 Polyclonal Antibody

catalog number: **E-AB-10997**

**Note:** Centrifuge before opening to ensure complete recovery of vial contents.

### Description

<b>Reactivity</b>	Human;Mouse;Rat
<b>Immunogen</b>	Recombinant protein of human BCL10
<b>Host</b>	Rabbit
<b>Isotype</b>	IgG
<b>Purification</b>	Affinity purification
<b>Buffer</b>	Phosphate buffered solution, pH 7.4, containing 0.05% stabilizer and 50% glycerol.

### Applications

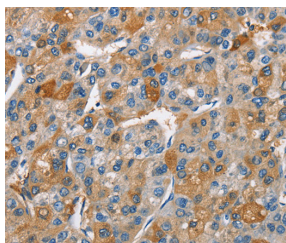
Applications	Recommended Dilution
<b>WB</b>	1:500-1:2000
<b>IHC</b>	1:50-1:200

### Data

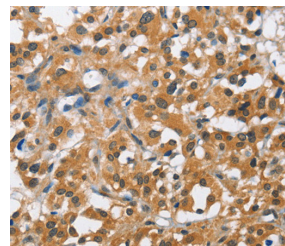


Western Blot analysis of Hela cell using BCL10 Polyclonal Antibody at dilution of 1:950

**Calculated-MW:26 kDa**



Immunohistochemistry of paraffin-embedded Human liver cancer using BCL10 Polyclonal Antibody at dilution of 1:40



Immunohistochemistry of paraffin-embedded Human thyroid cancer using BCL10 Polyclonal Antibody at dilution of 1:40

### Preparation & Storage

<b>Storage</b>	Store at -20°C Valid for 12 months. Avoid freeze / thaw cycles.
<b>Shipping</b>	The product is shipped with ice pack, upon receipt, store it immediately at the temperature recommended.

### Background

### For Research Use Only

This gene was identified by its translocation in a case of mucosa-associated lymphoid tissue (MALT) lymphoma. The protein encoded by this gene contains a caspase recruitment domain (CARD), and has been shown to induce apoptosis and to activate NF-kappaB. This protein is reported to interact with other CARD domain containing proteins including CARD9, 10, 11 and 14, which are thought to function as upstream regulators in NF-kappaB signaling. This protein is found to form a complex with MALT1, a protein encoded by another gene known to be translocated in MALT lymphoma.

## For Research Use Only

Toll-free: 1-888-852-8623  
Web: [www.elabscience.com](http://www.elabscience.com)

Tel: 1-832-243-6086  
Email: [techsupport@elabscience.com](mailto:techsupport@elabscience.com)

Fax: 1-832-243-6017

Rev. V1.8