

# Serpina1 Polyclonal Antibody

catalog number: D-AB-10209L

**Note:** Centrifuge before opening to ensure complete recovery of vial contents.

## Description

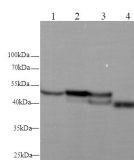
<b>Reactivity</b>	Human;Mouse;Rat
<b>Immunogen</b>	Recombinant Rat Serpina1 protein expressed by E.coli
<b>Host</b>	Rabbit
<b>Isotype</b>	IgG
<b>Purification</b>	Antigen Affinity Purification
<b>Conjugation</b>	Unconjugated
<b>buffer</b>	PBS with 0.05% proclin 300, 1% protective protein and 50% glycerol,pH7.4

## Applications

## Recommended Dilution

<b>WB</b>	1:500-1000
-----------	------------

## Data



Western blot with Serpina1 Polyclonal antibody at dilution of

1:500.lane 1:Hep G2 whole cell lysate,lane 2:Mouse

kidney,lane 3:Mouse liver,lane 4:Rat kidney,lane 5:Rat liver

**Observed-MV:43 kDa,50kDa**

**Calculated-MV:46 kDa**

## Preparation & Storage

<b>Storage</b>	Store at -20°C Valid for 12 months. Avoid freeze / thaw cycles.
<b>Shipping</b>	The product is shipped with ice pack,upon receipt,store it immediately at the temperature recommended.

## Background

SERPINA1 is the gene for a protein called alpha-1-antitrypsin (AAT),which is a serine protease inhibitor whose targets include elastase,plasmin,thrombin,trypsin,chymotrypsin,and plasminogen activator. AAT is a glycoprotein synthesized primarily by hepatocytes,with smaller amountssynthesized by intestinal epithelial cells,neutrophils,pulmonary alveolar cells and macrophages. AAT is the most abundant,endogenous serine protease inhibitor in blood circulation and it has been implicated in regulating vital fluid phase biological events such as blood coagulation,fibrinolysis,complement activation,apoptosis,reproduction,tumor progression and inflammatory response. The primary function of AAT is thought to be the inactivation of neutrophil elastase and other endogenous serine proteases. Defects in SERPINA1 can cause emphysema or liver disease.

## For Research Use Only