

## Recombinant Human UBE2D3 Protein

**Catalog Number: PKSH033183**

**Note:** Centrifuge before opening to ensure complete recovery of vial contents.

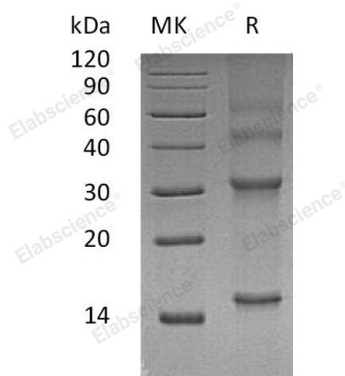
### Description

<b>Species</b>	Human
<b>Source</b>	E.coli-derived Human UBE2D3 protein Met 1-Met 147
<b>Calculated MW</b>	16.6 kDa
<b>Observed MW</b>	15 kDa
<b>Accession</b>	AAH66917
<b>Bio-activity</b>	Not validated for activity

### Properties

<b>Purity</b>	> 95 % as determined by reducing SDS-PAGE.
<b>Concentration</b>	Subject to label value.
<b>Endotoxin</b>	< 1.0 EU per µg of the protein as determined by the LAL method.
<b>Storage</b>	Store at < -20°C, stable for 6 months. Please minimize freeze-thaw cycles.
<b>Shipping</b>	This product is provided as liquid. It is shipped at frozen temperature with blue ice/gel packs. Upon receipt, store it immediately at < -20°C.
<b>Formulation</b>	Supplied as a 0.2 µm filtered solution of 20mM Tris-HCl, 8% Sucrose, 150mM NaCl, 50% Glycerol, 0.05% Tween 80, 1mM TCEP, pH7.1.

### Data



> 95 % as determined by reducing SDS-PAGE.

### Background

UBE2D3 is an enzyme that belongs to the ubiquitin-conjugating enzyme family. Ubiquitination involves at least three classes of enzymes: ubiquitin-activating enzymes, or E1s, ubiquitin-conjugating enzymes, or E2s, and ubiquitin-protein ligases, or E3s. This enzyme functions in the ubiquitination of the tumor-suppressor protein p53, which is induced by an E3 ubiquitin-protein ligase.