

Recombinant ATG3 Monoclonal Antibody

catalog number: **AN300723L**

Note: Centrifuge before opening to ensure complete recovery of vial contents.

Description

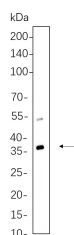
Reactivity	Human;Mouse;Rat
Immunogen	Recombinant Human ATG3 protein
Host	Rabbit
Isotype	IgG, κ
Clone	B662
Purification	Protein A
Buffer	PBS, 50% glycerol, 0.05% Proclin 300, 0.05% protein protectant.

Applications

Recommended Dilution

IHC	1:200-1:1000
WB	1:500-1:3000
IF	1:200-1:1000
ELISA	1:5000-1:20000

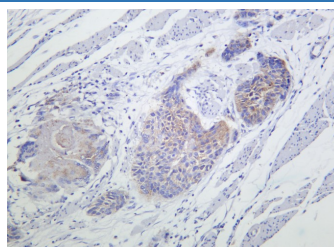
Data



Western Blot with Recombinant ATG3 Monoclonal Antibody at dilution of 1:1000 dilution. Lane A: 3T3-L1 cell lysate.

Observed-MW:36 kDa

Calculated-MW:36 kDa



Immunohistochemistry of paraffin-embedded human esophageal cancer using Recombinant ATG3 Monoclonal Antibody at dilution of 1:200.

Preparation & Storage

Storage	Store at -20°C Valid for 12 months. Avoid freeze / thaw cycles.
Shipping	Ice bag

Background

This gene encodes a ubiquitin-like-conjugating enzyme and is a component of ubiquitination-like systems involved in autophagy, the process of degradation, turnover and recycling of cytoplasmic constituents in eukaryotic cells. This protein is known to play a role in regulation of autophagy during cell death. A pseudogene of this gene is located on chromosome 20. Alternative splicing results in multiple transcript variants encoding different isoforms.

For Research Use Only

Toll-free: 1-888-852-8623
Web: www.elabscience.com

Tel: 1-832-243-6086
Email: techsupport@elabscience.com

Fax: 1-832-243-6017

Rev. V1.2