

ATG5 Polyclonal Antibody

catalog number: E-AB-10814

Note: Centrifuge before opening to ensure complete recovery of vial contents.

Description

Reactivity	Human;Mouse;Rat
Immunogen	Recombinant protein of human ATG5
Host	Rabbit
Isotype	IgG
Purification	Affinity purification
Buffer	Phosphate buffered solution, pH 7.4, containing 0.05% stabilizer and 50% glycerol.

Applications

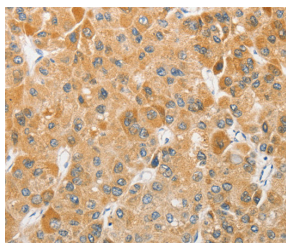
Applications	Recommended Dilution
WB	1:500-1:2000
IHC	1:50-1:200

Data

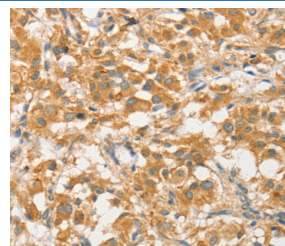


Western Blot analysis of NIH/3T3 and A172 cell using ATG5 Polyclonal Antibody at dilution of 1:475

Calculated-MW:32 kDa



Immunohistochemistry of paraffin-embedded Human liver cancer using ATG5 Polyclonal Antibody at dilution of 1:40



Immunohistochemistry of paraffin-embedded Human thyroid cancer using ATG5 Polyclonal Antibody at dilution of 1:40

Preparation & Storage

Storage	Store at -20°C Valid for 12 months. Avoid freeze / thaw cycles.
Shipping	The product is shipped with ice pack, upon receipt, store it immediately at the temperature recommended.

Background

Autophagy protein 5 is a protein that in humans is encoded by the ATG5 gene. It is an E3 ubiquitin ligase which is necessary for autophagy due to its role in autophagosome elongation. It is activated by ATG7 and forms a complex with ATG12 and ATG16L1. This complex is necessary for LC3-1 conjugation to PE to form LC3-II.

For Research Use Only