

# MAP1LC3A Monoclonal Antibody

catalog number: E-AB-22136

**Note:** Centrifuge before opening to ensure complete recovery of vial contents.

## Description

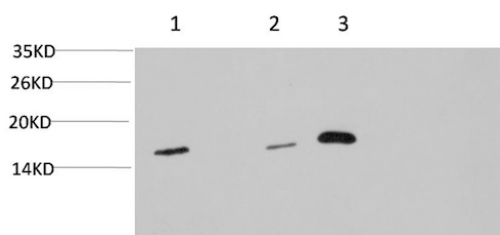
<b>Reactivity</b>	Human;Mouse;Rat
<b>Immunogen</b>	Synthetic Peptide of LC3A
<b>Host</b>	Mouse
<b>Isotype</b>	IgG
<b>Clone</b>	7E4
<b>Purification</b>	Protein A purification
<b>Conjugation</b>	Unconjugated
<b>buffer</b>	Phosphate buffered solution, pH 7.4, containing 0.05% stabilizer, 0.5% protein protectant and 50% glycerol.

## Applications

## Recommended Dilution

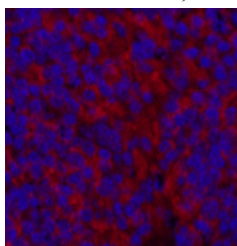
<b>WB</b>	1:500-1:2000
<b>IHC</b>	1:100-1:200
<b>IF</b>	1:100-1:300

## Data

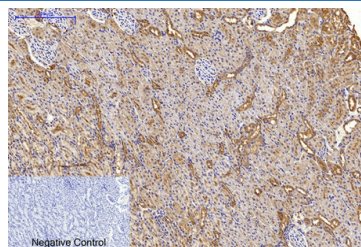


Western Blot analysis of 1) HeLa, 2) 3T3, 3) Rat brain using MAP1LC3A Monoclonal Antibody at dilution of 1:1000.

**Observed-MV:14, 16kDa**



Immunofluorescence analysis of Mouse spleen tissue using MAP1LC3A Monoclonal Antibody at dilution of 1:200.



Immunohistochemistry of paraffin-embedded Rat kidney tissue using MAP1LC3A Monoclonal Antibody at dilution of 1:200.

## Preparation & Storage

<b>Storage</b>	Store at -20°C Valid for 12 months. Avoid freeze / thaw cycles.
<b>Shipping</b>	The product is shipped with ice pack, upon receipt, store it immediately at the temperature recommended.

## Background

## For Research Use Only

# MAP1LC3A Monoclonal Antibody

catalog number: E-AB-22136



MAP1A and MAP1B are microtubule-associated proteins which mediate the physical interactions between microtubules and components of the cytoskeleton. MAP1A and MAP1B each consist of a heavy chain subunit and multiple light chain subunits. The protein encoded by this gene is one of the light chain subunits and can associate with either MAP1A or MAP1B. Two transcript variants encoding different isoforms have been found for this gene. The expression of variant 1 is suppressed in many tumor cell lines, suggesting that may be involved in carcinogenesis.

## For Research Use Only

A Reliable Research Partner in Life Science and Medicine  
Tel: 400-999-2100

Email: [techsupport@elabscience.cn](mailto:techsupport@elabscience.cn)

Web: [www.elabscience.cn](http://www.elabscience.cn)

Rev. V1.7