

Recombinant Human G6PD protein (His tag)

Catalog Number:PDEH100158



Note: Centrifuge before opening to ensure complete recovery of vial contents.

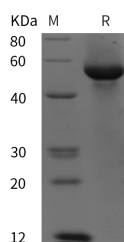
Description

Synonyms	Glucose-6-Phosphate 1-Dehydrogenase;G6PD
Species	Human
Expression Host	E.coli
Sequence	Met 1-Leu 515
Accession	P11413
Calculated Molecular Weight	56.5 kDa
Observed molecular weight	55 kDa
Tag	N-His

Properties

Purity	> 95 % as determined by reducing SDS-PAGE.
Endotoxin	Please contact us for more information.
Storage	Generally, lyophilized proteins are stable for up to 12 months when stored at -20 to -80°C. Reconstituted protein solution can be stored at 4-8°C for 2-7 days. Aliquots of reconstituted samples are stable at < -20°C for 3 months.
Shipping	This product is provided as lyophilized powder which is shipped with ice packs.
Formulation	Lyophilized from sterile PBS, pH 7.4. Normally 5 % - 8 % trehalose, mannitol and 0.01% Tween80 are added as protectants before lyophilization. Please refer to the specific buffer information in the printed manual.
Reconstitution	Please refer to the printed manual for detailed information.

Data



> 95 % as determined by reducing SDS-PAGE.

Background

Glucose-6-Phosphate 1-Dehydrogenase (G6PD) is a cytosolic enzyme that belongs to the glucose-6-phosphate dehydrogenase family. G6PD participates in the pentose phosphate pathway that supplies reducing energy to cells by maintaining the level of the co-enzyme nicotinamide adenine dinucleotide phosphate (NADPH). G6PD produces pentose sugars for nucleic acid synthesis and main producer of NADPH reducing power. NADPH in turn maintains the level of glutathione in these cells that helps protect the red blood cells against oxidative damage. It is notable in humans that G6PD is remarkable for its genetic diversity. G6PD deficiency may cause neonatal jaundice, acute hemolysis, or severe chronic non-spherocytic hemolytic anemia.

For Research Use Only

A Reliable Research Partner in Life Science and Medicine

Toll-free: 1-888-852-8623

Web: www.elabscience.com

Tel: 1-832-243-6086

Email: techsupport@elabscience.com

Fax: 1-832-243-6017