

PRKCSH Polyclonal Antibody

catalog number: **E-AB-19271**

Note: Centrifuge before opening to ensure complete recovery of vial contents.

Description

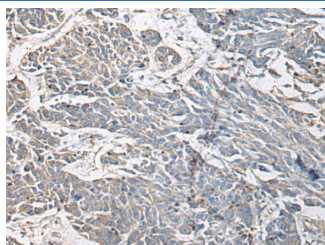
Reactivity	Human;Mouse
Immunogen	Fusion protein of human PRKCSH
Host	Rabbit
Isotype	IgG
Purification	Antigen affinity purification
Buffer	Phosphate buffered solution, pH 7.4, containing 0.05% stabilizer and 50% glycerol.

Applications

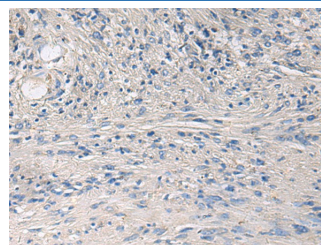
Recommended Dilution

IHC	1:50-1:200
------------	------------

Data



Immunohistochemistry of paraffin-embedded Human colorectal cancer tissue using PRKCSH Polyclonal Antibody at dilution of 1:65(×200)



Immunohistochemistry of paraffin-embedded Human brain tissue using PRKCSH Polyclonal Antibody at dilution of 1:65(×200)

Preparation & Storage

Storage	Store at -20°C Valid for 12 months. Avoid freeze / thaw cycles.
Shipping	The product is shipped with ice pack,upon receipt,store it immediately at the temperature recommended.

Background

This gene encodes the beta-subunit of glucosidase II, an N-linked glycan-processing enzyme in the endoplasmic reticulum. The encoded protein is an acidic phosphoprotein known to be a substrate for protein kinase C. Mutations in this gene have been associated with the autosomal dominant polycystic liver disease. Alternative splicing results in multiple transcript variants. PRKCSH (Protein Kinase C Substrate 80K-H) is a Protein Coding gene. Diseases associated with PRKCSH include Polycystic Liver Disease and Polycystic Kidney And Hepatic Disease. Among its related pathways are Advanced glycosylation endproduct receptor signaling and Innate Immune System. GO annotations related to this gene include calcium ion binding and ion channel binding.

For Research Use Only