

Recombinant Human CCL28 Protein (His Tag)

Catalog Number: PDEH100885

Note: Centrifuge before opening to ensure complete recovery of vial contents.

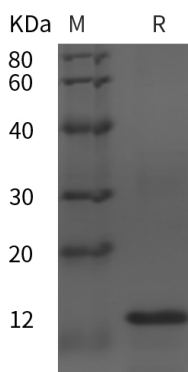
Description

Species	Human
Source	E.coli-derived Human CCL28 protein Ile23-Tyr127, with an C-terminal His
Calculated MW	11.4 kDa
Observed MW	14 kDa
Accession	Q9NRJ3
Bio-activity	Not validated for activity

Properties

Purity	> 95% as determined by reducing SDS-PAGE.
Endotoxin	< 10 EU/mg of the protein as determined by the LAL method
Storage	Generally, lyophilized proteins are stable for up to 12 months when stored at -20 to -80°C. Reconstituted protein solution can be stored at 4-8°C for 2-7 days. Aliquots of reconstituted samples are stable at < -20°C for 3 months.
Shipping	This product is provided as lyophilized powder which is shipped with ice packs.
Formulation	Lyophilized from a 0.2 µm filtered solution in PBS with 5% Trehalose and 5% Mannitol.
Reconstitution	It is recommended that sterile water be added to the vial to prepare a stock solution of 0.5 mg/mL. Concentration is measured by UV-Vis.

Data



SDS-PAGE analysis of Human CCL28 proteins, 2 µg/lane of Recombinant Human CCL28 proteins was resolved with SDS-PAGE under reducing conditions, showing bands at 14 kDa.

Background

Chemokine (C-C Motif) Ligand 28 (CCL28) is a novel chemokine that shares the most homology with CCL27/CTACK. CCL28 shows chemotactic activity for resting CD4, CD8 T-cells and eosinophils. It Binds to CCR3 and CCR10 and induces calcium mobilization in a dose-dependent manner. CCR10 (GPR2 orphan receptor) is also the receptor for CCL27/CTACK. CCL28 is preferentially expressed by epithelial cells of diverse tissues, with highest expression level in normal and pathological colon. It is also expressed in normal and asthmatic lung tissues. Human and mouse CCL28 shares 83% sequence identity in their mature regions.

For Research Use Only

Toll-free: 1-888-852-8623
Web: www.elabscience.com

Tel: 1-832-243-6086
Email: techsupport@elabscience.com

Fax: 1-832-243-6017