

KHDRBS1 Polyclonal Antibody

catalog number: E-AB-62359

Note: Centrifuge before opening to ensure complete recovery of vial contents.

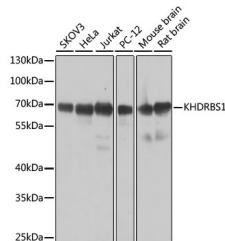
Description

Reactivity	Human;Mouse;Rat
Immunogen	A synthetic peptide of human KHDRBS1 (NP_006550.1).
Host	Rabbit
Isotype	IgG
Purification	Affinity purification
Buffer	Phosphate buffered solution, pH 7.4, containing 0.05% stabilizer and 50% glycerol.

Applications

Applications	Recommended Dilution
WB	1:500-1:2000
IHC	1:100-1:200
IF	1:50-1:200

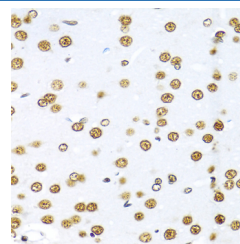
Data



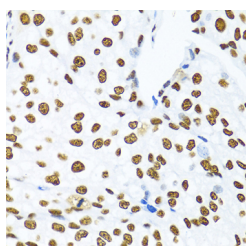
Western blot analysis of extracts of various cell lines using KHDRBS1 Polyclonal Antibody at dilution of 1:1000.

Observed-MW:68 kDa

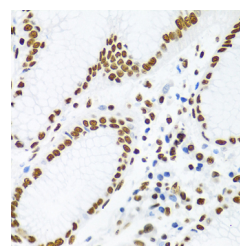
Calculated-MW:44 kDa/45 kDa/48 kDa



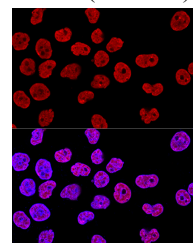
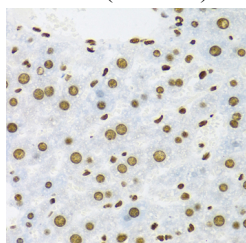
Immunohistochemistry of paraffin-embedded Rat brain using KHDRBS1 Polyclonal Antibody at dilution of 1:100 (40x lens).



Immunohistochemistry of paraffin-embedded Human prostate cancer using KHDRBS1 Polyclonal Antibody at dilution of 1:100 (40x lens).

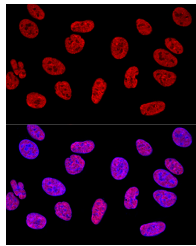


Immunohistochemistry of paraffin-embedded Human stomach using KHDRBS1 Polyclonal Antibody at dilution of 1:100 (40x lens).

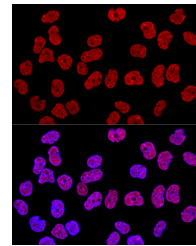


For Research Use Only

Immunohistochemistry of paraffin-embedded Mouse liver using KHDRBS1 Polyclonal Antibody at dilution of 1:100 (40x lens).



Confocal immunofluorescence analysis of HeLa cells using KHDRBS1 Polyclonal Antibody at dilution of 1:400. Blue: DAPI for nuclear staining.



Confocal immunofluorescence analysis of U2OS cells using KHDRBS1 Polyclonal Antibody at dilution of 1:400. Blue: DAPI for nuclear staining.

Confocal immunofluorescence analysis of Hela cells using KHDRBS1 Polyclonal Antibody at dilution of 1:400. Blue: DAPI for nuclear staining.

Preparation & Storage

Storage

Store at -20°C Valid for 12 months. Avoid freeze / thaw cycles.

Shipping

The product is shipped with ice pack, upon receipt, store it immediately at the temperature recommended.

Background

This gene encodes a member of the K homology domain-containing, RNA-binding, signal transduction-associated protein family. The encoded protein appears to have many functions and may be involved in a variety of cellular processes, including alternative splicing, cell cycle regulation, RNA 3'-end formation, tumorigenesis, and regulation of human immunodeficiency virus gene expression. Alternative splicing results in multiple transcript variants.

For Research Use Only

Toll-free: 1-888-852-8623
Web: www.elabscience.com

Tel: 1-832-243-6086
Email: techsupport@elabscience.com

Fax: 1-832-243-6017

Rev. V1.7