

# GFAP Monoclonal Antibody

catalog number: E-AB-22022

**Note:** Centrifuge before opening to ensure complete recovery of vial contents.

## Description

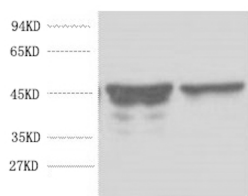
<b>Reactivity</b>	Mouse;Rat
<b>Immunogen</b>	Synthetic Peptide
<b>Host</b>	Mouse
<b>Isotype</b>	IgG
<b>Clone</b>	3H1
<b>Purification</b>	Protein A purification
<b>Conjugation</b>	Unconjugated
<b>buffer</b>	Phosphate buffered solution, pH 7.4, containing 0.05% stabilizer, 0.5% protein protectant and 50% glycerol.

## Applications

## Recommended Dilution

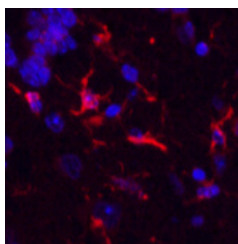
<b>WB</b>	1:500-1:5000
<b>IHC</b>	1:50-1:300
<b>IF</b>	1:100-1:300

## Data

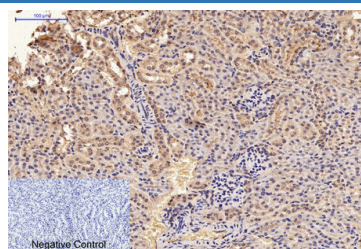


Western Blot analysis of Rat brain using GFAP Monoclonal Antibody at dilution of 1:5000.

**Observed-MV:45 kDa**  
**Calculated-MV:50 kDa**



Immunofluorescence analysis of Mouse brain tissue using GFAP Monoclonal Antibody at dilution of 1:200.



Immunohistochemistry of paraffin-embedded Mouse kidney tissue using GFAP Monoclonal Antibody at dilution of 1:200.

## Preparation & Storage

<b>Storage</b>	Store at -20°C Valid for 12 months. Avoid freeze / thaw cycles.
<b>Shipping</b>	The product is shipped with ice pack, upon receipt, store it immediately at the temperature recommended.

## Background

## For Research Use Only

# GFAP Monoclonal Antibody

catalog number: E-AB-22022



This gene encodes one of the major intermediate filament proteins of mature astrocytes. It is used as a marker to distinguish astrocytes from other glial cells during development. Mutations in this gene cause Alexander disease, a rare disorder of astrocytes in the central nervous system. Alternative splicing results in multiple transcript variants encoding distinct isoforms.

## For Research Use Only

A Reliable Research Partner in Life Science and Medicine  
Tel: 400-999-2100

Email: [techsupport@elabscience.cn](mailto:techsupport@elabscience.cn)

Web: [www.elabscience.cn](http://www.elabscience.cn)

Rev. V1.7