

BSA Polyclonal Antibody

Catalog Number:E-AB-13934



Note: Centrifuge before opening to ensure complete recovery of vial contents.

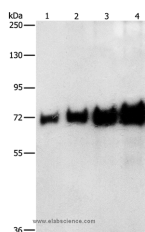
Description

Reactivity	Bovine serum albumin
Immunogen	Recombinant protein of human BSA
Host	Rabbit
Isotype	IgG
Purification	Affinity purification
Conjugation	Unconjugated
Formulation	PBS with 0.05% sodium azide and 50% glycerol, PH7.4

Applications Recommended Dilution

WB	1:1000-1:5000
-----------	---------------

Data



Western Blot analysis of 0.05-0.4ug BSA using BSA Polyclonal Antibody at dilution of 1:1150
Calculated Mw:69kDa

Preparation & Storage

Storage Store at -20°C. Avoid freeze / thaw cycles.

Background

Serum albumin, the main protein of plasma, has a good binding capacity for water, Ca²⁺, Na⁺, K⁺, fatty acids, hormones, bilirubin and drugs. Its main function is the regulation of the colloidal osmotic pressure of blood. Major zinc transporter in plasma, typically binds about 80% of all plasma zinc.

For Research Use Only

A Reliable Research Partner in Life Science and Medicine

Toll-free: 1-888-852-8623

Web: www.elabscience.com

Tel: 1-832-243-6086

Email: techsupport@elabscience.com

Fax: 1-832-243-6017