

APMAP Polyclonal Antibody

catalog number: E-AB-53279

Note: Centrifuge before opening to ensure complete recovery of vial contents.

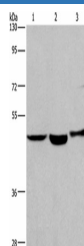
Description

| | |
|---------------------|--|
| Reactivity | Human |
| Immunogen | Synthetic peptide of human APMAP |
| Host | Rabbit |
| Isotype | IgG |
| Purification | Antigen affinity purification |
| Buffer | Phosphate buffered solution, pH 7.4, containing 0.05% stabilizer and 50% glycerol. |

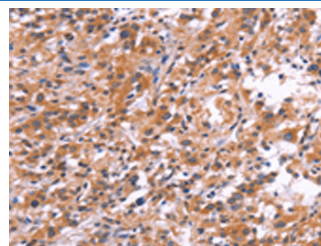
Applications Recommended Dilution

| | |
|------------|--------------|
| WB | 1:500-1:2000 |
| IHC | 1:25-1:100 |

Data

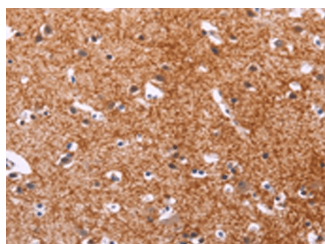


Western blot analysis of Human placenta tissue Human fetal liver tissue 231 cells using APMAP Polyclonal Antibody at dilution of 1:400



Immunohistochemistry of paraffin-embedded Human thyroid cancer tissue using APMAP Polyclonal Antibody at dilution of 1:30(x200)

Observed-MW:Refer to figures
Calculated-MW:46 kDa



Immunohistochemistry of paraffin-embedded Human brain tissue using APMAP Polyclonal Antibody at dilution of 1:30(x200)

Preparation & Storage

| | |
|-----------------|--|
| Storage | Store at -20°C Valid for 12 months. Avoid freeze / thaw cycles. |
| Shipping | The product is shipped with ice pack, upon receipt, store it immediately at the temperature recommended. |

Background

For Research Use Only

C20orf3, also known as APMAP (adipocyte plasma membrane-associated protein), is a 416 amino acid single-pass type II membrane protein that belongs to the strictosidine synthase family and is thought to play a role in adipocyte differentiation. The gene encoding C20orf3 maps to human chromosome 20, which houses over 600 genes some of which are associated with Creutzfeldt-Jakob disease, amyotrophic lateral sclerosis, spinal muscular atrophy, ring chromosome 20 epilepsy syndrome and Alagille syndrome. Additionally, chromosome 20 contains a region with numerous genes which are thought important for seminal production and may be potential targets for male contraception

For Research Use Only

Toll-free: 1-888-852-8623
Web: www.elabscience.com

Tel: 1-832-243-6086
Email: techsupport@elabscience.com

Fax: 1-832-243-6017

Rev. V1.7