

## Recombinant Human LSAMP Protein (His Tag)

**Catalog Number:** PKSH033342

**Note:** *Centrifuge before opening to ensure complete recovery of vial contents.*

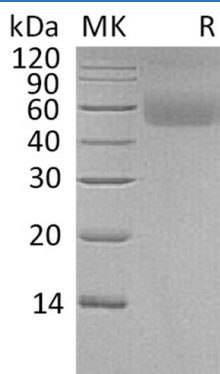
### Description

<b>Species</b>	Human
<b>Source</b>	HEK293 Cells-derived Human LSAMP protein Val29-Asn315, with an C-terminal His
<b>Calculated MW</b>	32.8 kDa
<b>Observed MW</b>	45-65 kDa
<b>Accession</b>	Q13449
<b>Bio-activity</b>	Not validated for activity

### Properties

<b>Purity</b>	> 95 % as determined by reducing SDS-PAGE.
<b>Endotoxin</b>	< 1.0 EU per µg of the protein as determined by the LAL method.
<b>Storage</b>	Generally, lyophilized proteins are stable for up to 12 months when stored at -20 to -80°C. Reconstituted protein solution can be stored at 4-8°C for 2-7 days. Aliquots of reconstituted samples are stable at < -20°C for 3 months.
<b>Shipping</b>	This product is provided as lyophilized powder which is shipped with ice packs.
<b>Formulation</b>	Lyophilized from a 0.2 µm filtered solution of 20mM PB, 150mM NaCl, pH 7.4. Normally 5% - 8% trehalose, mannitol and 0.01% Tween 80 are added as protectants before lyophilization.
	Please refer to the specific buffer information in the printed manual.
<b>Reconstitution</b>	Please refer to the printed manual for detailed information.

### Data



> 95 % as determined by reducing SDS-PAGE.

### Background

Limbic system-associated membrane protein is also known as LSAMP; IgLON family member 3. In humans; it is encoded by the LSAMP gene. It belongs to the immunoglobulin superfamily and contains 3 Ig-like C2-type domains. Limbic system-associated membrane protein mediates selective neuronal growth and axon targeting. It contributes to the guidance of developing axons and remodeling of mature circuits in the limbic system. It is also essential for normal growth of the hippocampal mossy fiber projection

### For Research Use Only

Toll-free: 1-888-852-8623  
Web: [www.elabscience.com](http://www.elabscience.com)

Tel: 1-832-243-6086  
Email: [techsupport@elabscience.com](mailto:techsupport@elabscience.com)

Fax: 1-832-243-6017