

AF/LE Purified Anti-Mouse/Human GAL3 Antibody[M3/38]

catalog number: AN003440



Note: Centrifuge before opening to ensure complete recovery of vial contents.

Description

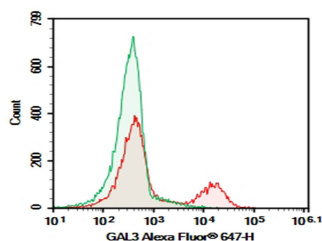
Reactivity	Mouse/Human
Immunogen	Recombinant Mouse GAL3 protein
Host	Rat
Isotype	Rat IgG2a, κ
Clone	M3/38
Purification	>98%, Protein A/G purified
Conjugation	None (AF/LE)
buffer	Sterile PBS, pH 7.2. < 1.0 EU per mg of the antibody as determined by the LAL method

Applications

Recommended Dilution

FCM	2 $\mu\text{g/mL}$ (1×10^5 - 5×10^5 cells)
------------	---

Data



Human peripheral blood lymphocytes were stained with 0.2 μg AF/LE Purified Anti-Mouse/Human GAL3 Antibody[M3/38] (Right) and 0.2 μg Mouse IgG2a, κ Isotype Control (Left), followed by Alexa Fluor® 647-conjugated Goat Anti-Mouse IgG Secondary Antibody.

Preparation & Storage

Storage	Store at 4°C valid for 12 months or -20°C valid for long term storage, avoid freeze / thaw cycles. This preparation contains no preservatives, thus it should be handled under aseptic conditions.
Shipping	Order now, ship in 3 days

Background

Galactose-specific lectin which binds IgE. May mediate with the alpha-3, beta-1 integrin the stimulation by CSPG4 of endothelial cells migration. Together with DMBT1, required for terminal differentiation of columnar epithelial cells during early embryogenesis. In the nucleus: acts as a pre-mRNA splicing factor. Involved in acute inflammatory responses including neutrophil activation and adhesion, chemoattraction of monocytes macrophages, opsonization of apoptotic neutrophils, and activation of mast cells. Together with TRIM16, coordinates the recognition of membrane damage with mobilization of the core autophagy regulators ATG16L1 and BECN1 in response to damaged endomembranes.

For Research Use Only

A Reliable Research Partner in Life Science and Medicine
Tel: 400-999-2100

Email: techsupport@elabscience.cn

Web: www.elabscience.cn

Rev. V1.4