

Recombinant Human LILRA2/ILT1 Protein (His Tag)

Catalog Number: PKSH032696

Note: Centrifuge before opening to ensure complete recovery of vial contents.

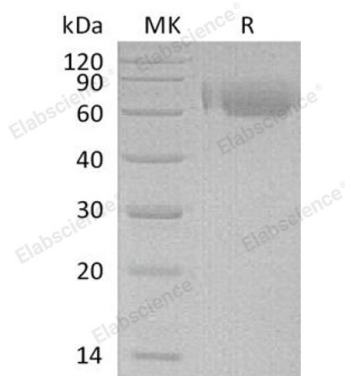
Description

Species	Human
Source	HEK293 Cells-derived Human LILRA2;ILT1 protein Gly24-Ser420, with an C-terminal His
Calculated MW	44.8 kDa
Observed MW	66 kDa
Accession	Q8N149-2
Bio-activity	Not validated for activity

Properties

Purity	> 95 % as determined by reducing SDS-PAGE.
Endotoxin	< 1.0 EU per µg of the protein as determined by the LAL method.
Storage	Generally, lyophilized proteins are stable for up to 12 months when stored at -20 to -80 °C. Reconstituted protein solution can be stored at 4-8°C for 2-7 days. Aliquots of reconstituted samples are stable at < -20°C for 3 months.
Shipping	This product is provided as lyophilized powder which is shipped with ice packs.
Formulation	Lyophilized from a 0.2 µm filtered solution of 20mM PB, 150mM NaCl, pH7.4. Normally 5% - 8% trehalose, mannitol and 0.01% Tween 80 are added as protectants before lyophilization.
	Please refer to the specific buffer information in the printed manual.
Reconstitution	Please refer to the printed manual for detailed information.

Data



> 95 % as determined by reducing SDS-PAGE.

Background

Leukocyte Immunoglobulin-Like Receptor Subfamily A Member 2 (LILRA2) is a single-pass type I membrane protein. LILRA2 is expressed predominantly on monocytes and B cells, and at lower levels on dendritic cells and natural killer cells. LILRA2 contains four Ig-like C2-type domains, with short cytoplasmic domains lacking an immunoreceptor tyrosine-based inhibitory motif (ITIM) and with transmembrane regions containing a charged arginine residue, may initiate stimulatory cascades. LILRA2 does not bind class I MHC antigens.

For Research Use Only