

Recombinant Mouse TGFB2 Protein (His Tag)

Catalog Number: PKSM041169

Note: Centrifuge before opening to ensure complete recovery of vial contents.

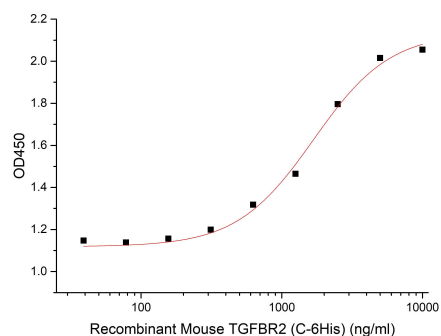
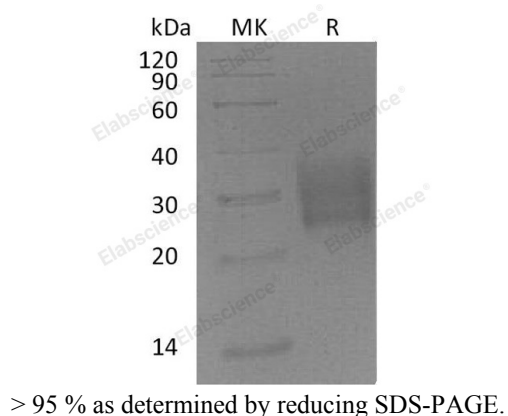
Description

Species	Mouse
Source	HEK293 Cells-derived Mouse TGFB2 protein Ile24-Asp159, with an C-terminal His
Calculated MW	16.2 kDa
Observed MW	25-38 kDa
Accession	Q62312-2
Bio-activity	Measured by its ability to inhibit TGF-beta 1 activity on TF- 1 human erythroleukemic cells. The ED ₅₀ for this effect is 1680.39ng/ml in the presence of 1ng/ml of recombinant human TGF-beta 1.

Properties

Purity	> 95 % as determined by reducing SDS-PAGE.
Endotoxin	< 1.0 EU per µg of the protein as determined by the LAL method.
Storage	Generally, lyophilized proteins are stable for up to 12 months when stored at -20 to -80 °C. Reconstituted protein solution can be stored at 4-8°C for 2-7 days. Aliquots of reconstituted samples are stable at < -20°C for 3 months.
Shipping	This product is provided as lyophilized powder which is shipped with ice packs.
Formulation	Lyophilized from a 0.2 µm filtered solution of PBS, pH 7.4. Normally 5% - 8% trehalose, mannitol and 0.01% Tween 80 are added as protectants before lyophilization. Please refer to the specific buffer information in the printed manual.
Reconstitution	Please refer to the printed manual for detailed information.

Data



Measured by its ability to inhibit TGF-beta 1 activity on TF- 1 human erythroleukemic cells. The ED₅₀ for this effect is 1680.39ng/ml in the presence of 1ng/ml of recombinant human TGF-beta 1.

Background

Transforming growth factor- β (TGF- β) is an essential regulator in the processes of development, cell proliferation, and extracellular matrix deposition. TGF- β regulates cellular processes by binding to three high-affinity cell surface receptors: TGF- β receptor type I (TGF- β -RI), TGF- β receptor type II (TGF- β -RII), and TGF- β receptor type III (TGF- β -RIII). TGF- β RII consists of a C-terminal protein kinase domain and an N-terminal ectodomain and belongs to transforming growth factor-beta (TGF- β) receptor subfamily. TGF- β RII has a protein kinase domain which can form a heterodimeric complex with another receptor protein and bind TGF-beta. This receptor/ligand complex phosphorylates protein will enter the nucleus and regulate the transcription of a subset of genes related to cell proliferation.