

HSP90B1 Polyclonal Antibody

catalog number: **E-AB-60131**

Note: Centrifuge before opening to ensure complete recovery of vial contents.

Description

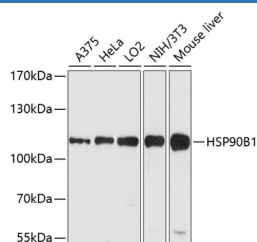
Reactivity	Human;Mouse;Rat
Immunogen	A synthetic peptide of human HSP90B1 (NP_003290.1).
Host	Rabbit
Isotype	IgG
Purification	Affinity purification
Buffer	Phosphate buffered solution, pH 7.4, containing 0.05% stabilizer and 50% glycerol.

Applications

Recommended Dilution

WB	1:500-1:2000
IHC	1:50-1:100
IF	1:50-1:100

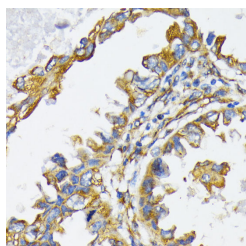
Data



Western blot analysis of extracts of various cell lines using HSP90B1 Polyclonal Antibody at dilution of 1:1000.

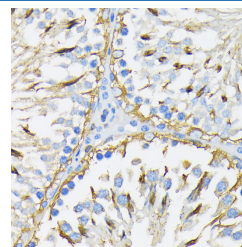
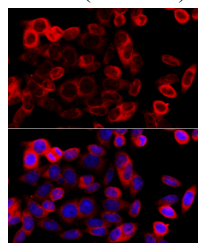
Observed-MW: 110 kDa

Calculated-MW: 92 kDa

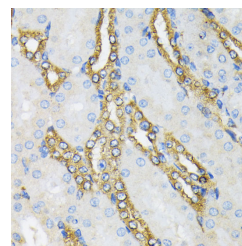


Immunohistochemistry of paraffin-embedded Human lung cancer using HSP90B1 Polyclonal Antibody at dilution of

1:200 (40x lens).

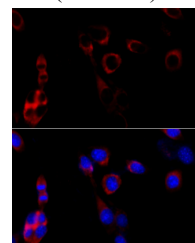


Immunohistochemistry of paraffin-embedded Rat testis using HSP90B1 Polyclonal Antibody at dilution of 1:200 (40x lens).



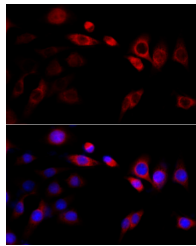
Immunohistochemistry of paraffin-embedded Mouse kidney using HSP90B1 Polyclonal Antibody at dilution of 1:200

(40x lens).



For Research Use Only

Immunofluorescence analysis of HeLa cells using HSP90B1 Polyclonal Antibody at dilution of 1:100 (40x lens). Blue: DAPI for nuclear staining.



Immunofluorescence analysis of NIH/3T3 cells using HSP90B1 Polyclonal Antibody at dilution of 1:100 (40x lens). Blue: DAPI for nuclear staining.

Immunofluorescence analysis of PC-12 cells using HSP90B1 Polyclonal Antibody at dilution of 1:100 (40x lens). Blue: DAPI for nuclear staining.

Preparation & Storage

Storage

Store at -20°C Valid for 12 months. Avoid freeze / thaw cycles.

Shipping

The product is shipped with ice pack, upon receipt, store it immediately at the temperature recommended.

Background

This gene encodes a member of a family of adenosine triphosphate(ATP)-metabolizing molecular chaperones with roles in stabilizing and folding other proteins. The encoded protein is localized to melanosomes and the endoplasmic reticulum. Expression of this protein is associated with a variety of pathogenic states, including tumor formation. There is a microRNA gene located within the 5' exon of this gene. There are pseudogenes for this gene on chromosomes 1 and 15.

For Research Use Only