

CLEC3B Polyclonal Antibody

catalog number: E-AB-18795

Note: Centrifuge before opening to ensure complete recovery of vial contents.

Description

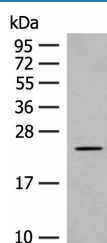
Reactivity	Human;Mouse;Rat
Immunogen	Fusion protein of human CLEC3B
Host	Rabbit
Isotype	IgG
Purification	Antigen affinity purification
Conjugation	Unconjugated
buffer	Phosphate buffered solution, pH 7.4, containing 0.05% stabilizer and 50% glycerol.

Applications

Recommended Dilution

WB	1:500-1:2000
IHC	1:40-1:200

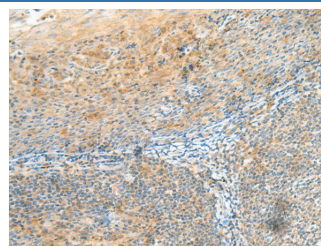
Data



Western blot analysis of Rat heart tissue lysate using CLEC3B Polyclonal Antibody at dilution of 1:650

Observed-MV: Refer to figures

Calculated-MV: 23 kDa



Immunohistochemistry of paraffin-embedded Human tonsil tissue using CLEC3B Polyclonal Antibody at dilution of

1:90(×200)

Preparation & Storage

Storage	Store at -20°C Valid for 12 months. Avoid freeze / thaw cycles.
Shipping	The product is shipped with ice pack, upon receipt, store it immediately at the temperature recommended.

Background

CLEC3B (C-Type Lectin Domain Family 3 Member B) is a Protein Coding gene. Among its related pathways are Response to elevated platelet cytosolic Ca²⁺. GO annotations related to this gene include calcium ion binding and heparin binding. An important paralog of this gene is CLEC3A.

For Research Use Only