

EEF1 gamma Polyclonal Antibody

catalog number: **E-AB-14056**

Note: Centrifuge before opening to ensure complete recovery of vial contents.

Description

Reactivity	Human;Mouse;Rat
Immunogen	Recombinant protein of human EEF1G
Host	Rabbit
Isotype	IgG
Purification	Affinity purification
Buffer	Phosphate buffered solution, pH 7.4, containing 0.05% stabilizer and 50% glycerol.

Applications

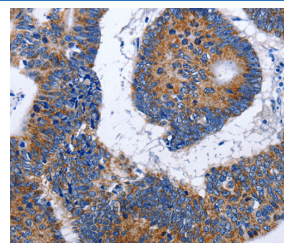
Applications	Recommended Dilution
WB	1:500-1:2000
IHC	1:50-1:200

Data



Western Blot analysis of Human liver cancer tissue using EEF1 gamma Polyclonal Antibody at dilution of 1:800

Calculated-MW:50 kDa



Immunohistochemistry of paraffin-embedded Human colon cancer using EEF1 gamma Polyclonal Antibody at dilution of 1:50

of 1:50

Preparation & Storage

Storage	Store at -20°C Valid for 12 months. Avoid freeze / thaw cycles.
Shipping	The product is shipped with ice pack, upon receipt, store it immediately at the temperature recommended.

Background

This gene encodes a subunit of the elongation factor-1 complex, which is responsible for the enzymatic delivery of aminoacyl tRNAs to the ribosome. This subunit contains an N-terminal glutathione transferase domain, which may be involved in regulating the assembly of multisubunit complexes containing this elongation factor and aminoacyl-tRNA synthetases. Probably plays a role in anchoring the complex to other cellular components.

For Research Use Only