

# Recombinant Human c-KIT/CD117 Protein (aa 50-190, His Tag)



Catalog Number:PKSH030940

**Note:** Centrifuge before opening to ensure complete recovery of vial contents.

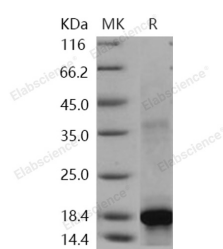
## Description

<b>Synonyms</b>	Mast/stem cell growth factor receptor Kit;SCFR;Piebald trait protein;PBT;Proto-oncogene c-Kit;Tyrosine-protein kinase Kit;p145 c-kit;v-kit Hardy-Zuckerman 4 feline sarcoma viral oncogene homolog;CD117;PBT
<b>Species</b>	Human
<b>Expression Host</b>	E.coli
<b>Sequence</b>	Val50-Gln190
<b>Accession</b>	P10721-1
<b>Calculated Molecular Weight</b>	17.9 kDa
<b>Observed molecular weight</b>	18 kDa
<b>Tag</b>	N-His

## Properties

<b>Purity</b>	> 90 % as determined by reducing SDS-PAGE.
<b>Endotoxin</b>	Please contact us for more information.
<b>Storage</b>	Generally, lyophilized proteins are stable for up to 12 months when stored at -20 to -80°C. Reconstituted protein solution can be stored at 4-8°C for 2-7 days. Aliquots of reconstituted samples are stable at < -20°C for 3 months.
<b>Shipping</b>	This product is provided as lyophilized powder which is shipped with ice packs.
<b>Formulation</b>	Lyophilized from sterile 137mM NaCl, 2.7mM KCl, 10mM Na <sub>2</sub> HPO <sub>4</sub> , 1.8mM KH <sub>2</sub> PO <sub>4</sub> , 15% glycerol, pH 2.7 Normally 5 % - 8 % trehalose, mannitol and 0.01% Tween80 are added as protectants before lyophilization. Please refer to the specific buffer informat
<b>Reconstitution</b>	Please refer to the printed manual for detailed information.

## Data



> 90 % as determined by reducing SDS-PAGE.

## Background

C-Kit is a type 3 transmembrane receptor for MGF (mast cell growth factor, also known as stem cell factor). c-Kit contains 5 Ig-like C2-type (immunoglobulin-like) domains, and 1 protein kinase domain. It belongs to the protein kinase superfamily, tyr protein kinase family and CSF-1/PDGF receptor subfamily. C-Kit contains 5 Ig-like C2-type (immunoglobulin-like) domains and 1 protein kinase domain. C-Kit has a tyrosine-protein kinase activity. Binding of the ligands leads to the autophosphorylation of KIT and its association with substrates such as phosphatidylinositol 3-kinase.

## For Research Use Only

A Reliable Research Partner in Life Science and Medicine

Toll-free: 1-888-852-8623

Web: [www.elabscience.com](http://www.elabscience.com)

Tel: 1-832-243-6086

Email: [techsupport@elabscience.com](mailto:techsupport@elabscience.com)

Fax: 1-832-243-6017

# Recombinant Human c-KIT/CD117 Protein (aa 50-190, His Tag)



Catalog Number:PKSH030940

---

Antibodies to c-Kit are widely used in immunohistochemistry to help distinguish particular types of tumour in histological tissue sections. It is used primarily in the diagnosis of GISTs. In GISTs, c-Kit staining is typically cytoplasmic, with stronger accentuation along the cell membranes. C-Kit antibodies can also be used in the diagnosis of mast cell tumours and in distinguishing seminomas from embryonal carcinomas. Mutations in c-Kit gene are associated with gastrointestinal stromal tumors, mast cell disease, acute myelogenous leukemia, and piebaldism. Defects in KIT are a cause of acute myelogenous leukemia (AML). AML is a malignant disease in which hematopoietic precursors are arrested in an early stage of development. Note=Somatic mutations that lead to constitutive activation of KIT are detected in AML patients.

---

## For Research Use Only

A Reliable Research Partner in Life Science and Medicine

Toll-free: 1-888-852-8623

Tel: 1-832-243-6086

Fax: 1-832-243-6017

Web: [www.elabscience.com](http://www.elabscience.com)

Email: [techsupport@elabscience.com](mailto:techsupport@elabscience.com)